



ATF-2 (Phospho-Ser112 or 94) Antibody Blocking Peptide

#51033

Catalog Number: 51033

Amount: 100µg/100µl

Form of Peptide: Peptide in 10 mM phosphate buffered saline (without Mg^{2+} and Ca^{2+}), pH 7.4, 150mM NaCl, 0.1 mM EDTA, 1 mg/ml BSA, 5% DMF and 5% glycerol.

Peptide Information: The synthesized phosphopeptide was derived from human ATF-2 around the phosphorylation site of serine 112 or 94 (D-L-S^P-P-L).

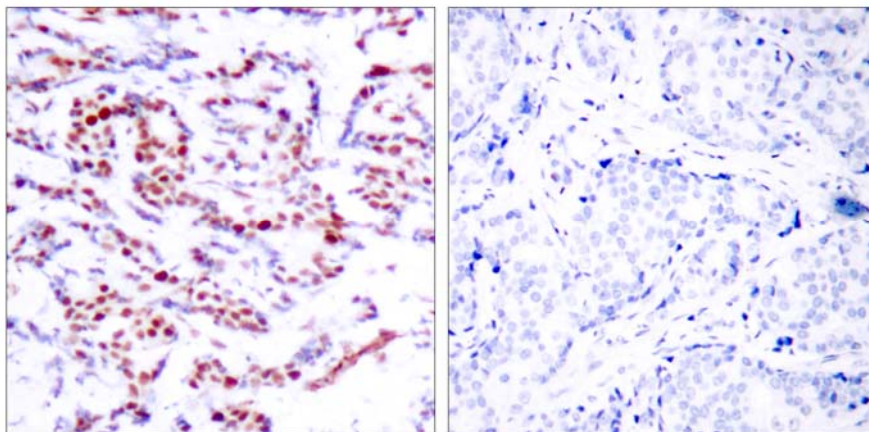
Storage: Store at -20°C.

Quality Control: The quality of the peptide was evaluated by reversed-phase HPLC and mass spectrometry.

Specificity: The peptide specifically blocks the signal of ATF-2 (phospho-Ser112 or 94) antibody (#11033) completely in IHC.

Applications: For Western blotting: add 10 µl of antibody and 10 µl of blocking peptide to 10 ml of antibody dilution buffer, and incubate at 4°C over night or at room temperature for 2 hours before allowing to react with the blot.

References: Beausoleil S A, et al. (2004) Proc Natl Acad Sci U S A. 101(33): 12130-12135.
Abdel-Hafiz H A, et al. (1992) Mol Endocrinol. 6: 2079-2089.
Gupta S, et al. (1995) Science. 267: 389-393.
van Dam H, et al. (1995) EMBO J. 14(8): 1798-1811.
Livingstone C, et al. (1995) EMBO J. 14: 1785-1797.



P-Peptide

-

+

Immunohistochemical analysis of paraffin-embedded human breast carcinoma tissue using ATF-2 (phospho-Ser112 or 94) antibody (#11033).

For Research Use Only