

Elk-1 (Phospho-Ser389) Antibody Blocking Peptide

#51037

Catalog Number: 51037

Amount: 100μg/100μl

Form of Peptide: Peptide in 10 mM phosphate buffered saline (without Mg²⁺ and Ca²⁺), pH 7.4, 150mM NaCl, 0.1 mM EDTA, 1 mg/ml BSA, 5% DMF and 5% glycerol.

Peptide Information: The synthesized phosphopeptide was derived from human Elk-1 around the phosphorylation site of serine 389 (P-R-S^P-P-A).

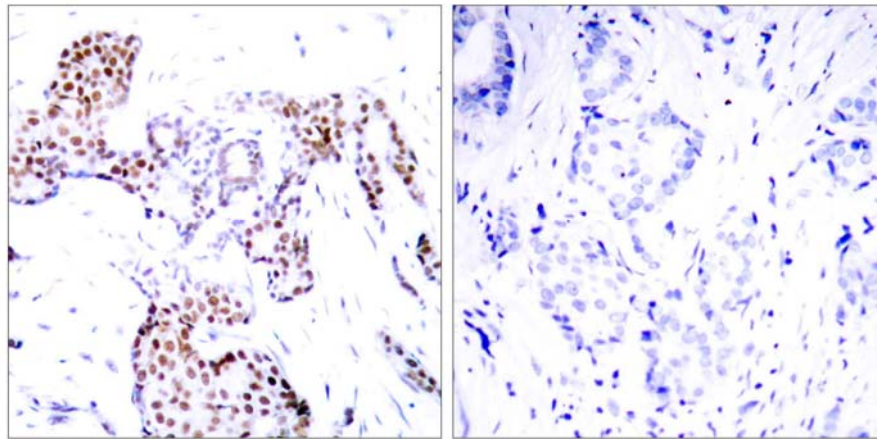
Storage: Store at -20°C.

Quality Control: The quality of the peptide was evaluated by reversed-phase HPLC and mass spectrometry.

Specificity: The peptide specifically blocks the signal of Elk-1 (phospho-Ser389) antibody (#11037) completely in IHC.

Applications: For Western blotting: add 10 μl of antibody and 10 μl of blocking peptide to 10 ml of antibody dilution buffer, and incubate at 4°C over night or at room temperature for 2 hours before allowing to react with the blot.

References: Janknecht R, et al. (1993) EMBO J. 12(13): 5097-5104.
Marais R, et al. (1993) Cell 73:381-393.
Kortjenann M, et al. (1994) Mol Cell Biol. 14:4815-4824.
Hill C S, et al. (1995) Cell. 80:199-211.
Cavigelli M, et al. (1995) EMBO J. 14:5957-5964.



P-Peptide

-

+

Immunohistochemical analysis of paraffin-embedded human breast carcinoma tissue using Elk-1 (phospho-Ser389) antibody (#11037).

For Research Use Only