



## Elk-1 (Phospho-Thr417) Antibody Blocking Peptide

#51038

**Catalog Number:** 51038

**Amount:** 100µg/100µl

**Form of Peptide:** Peptide in 10 mM phosphate buffered saline (without Mg<sup>2+</sup> and Ca<sup>2+</sup>), pH 7.4, 150mM NaCl, 0.1 mM EDTA, 1 mg/ml BSA, 5% DMF and 5% glycerol.

**Peptide Information:** The synthesized phosphopeptide was derived from human Elk-1 around the phosphorylation site of threonine 417 (L-S-T<sup>P</sup>-P-V).

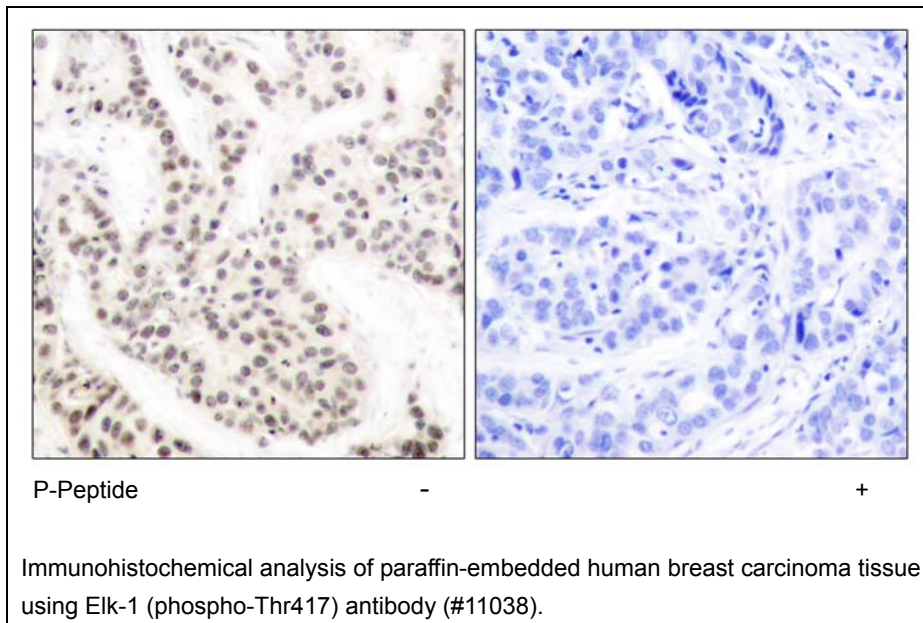
**Storage:** Store at -20°C.

**Quality Control:** The quality of the peptide was evaluated by reversed-phase HPLC and mass spectrometry.

**Specificity:** The peptide specifically blocks the signal of Elk-1 (phospho-Thr417) antibody (#11038) completely in IHC.

**Applications:** For Western blotting: add 10 µl of antibody and 10 µl of blocking peptide to 10 ml of antibody dilution buffer, and incubate at 4°C over night or at room temperature for 2 hours before allowing to react with the blot.

**References:** Huang Y, et al. (2000) *Biochem Biophys Res Commun.* 271(2): 456-463.  
Marais R, et al. (1993) *Cell* 73:381-393.  
Kortenjann M, et al. (1994) *Mol Cell Biol.* 14:4815-4824.  
Hill C S, et al. (1995) *Cell.* 80:199-211.  
Cavigelli M, et al. (1995) *EMBO J.* 14:5957-5964.



**For Research Use Only**