



MEF2A (Phospho-Thr312) Antibody Blocking Peptide

#51039

Catalog Number: 51039

Amount: 100µg/100µl

Form of Peptide: Peptide in 10 mM phosphate buffered saline (without Mg^{2+} and Ca^{2+}), pH 7.4, 150mM NaCl, 0.1 mM EDTA, 1 mg/ml BSA, 5% DMF and 5% glycerol.

Peptide Information: The synthesized phosphopeptide was derived from human MEF2A around the phosphorylation site of threonine 312 (L-A-T^P-P-V).

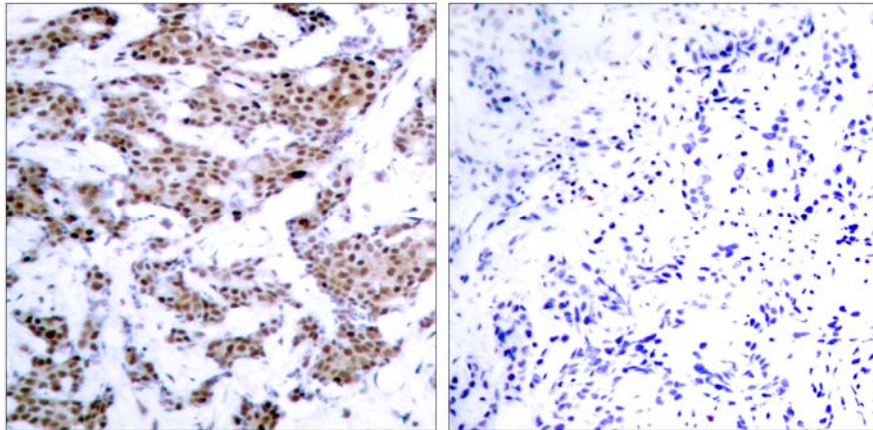
Storage: Store at -20°C.

Quality Control: The quality of the peptide was evaluated by reversed-phase HPLC and mass spectrometry.

Specificity: The peptide specifically blocks the signal of MEF2A (phospho-Thr312) antibody (#11039) completely in IHC.

Applications: For Western blotting: add 10 µl of antibody and 10 µl of blocking peptide to 10 ml of antibody dilution buffer, and incubate at 4°C over night or at room temperature for 2 hours before allowing to react with the blot.

References: Kato Y, et al. (2000) J Biol Chem. 275(24): 18534-18540.
Zhao M, et al. (1999) Mol Cell Biol. 19(1): 21-30.



P-Peptide

-

+

Immunohistochemical analysis of paraffin-embedded human breast carcinoma tissue, using MEF2A (phospho-Thr312) antibody (#11039).

For Research Use Only