



GATA-1 (Phospho-Ser142) Antibody Blocking Peptide

#51041

Catalog Number: 51041

Amount: 100µg/100µl

Form of Peptide: Peptide in 10 mM phosphate buffered saline (without Mg²⁺ and Ca²⁺), pH 7.4, 150mM NaCl, 0.1 mM EDTA, 1 mg/ml BSA, 5% DMF and 5% glycerol.

Peptide Information: The synthesized phosphopeptide was derived from human GATA-1 around the phosphorylation site of serine 142 (R-L-S^P-P-D).

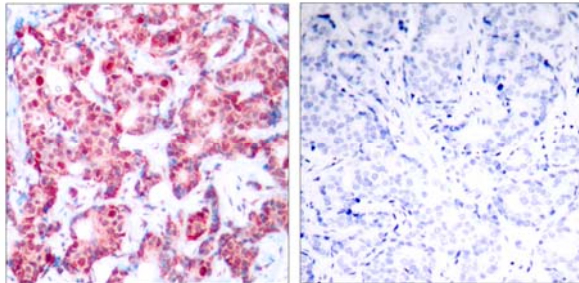
Storage: Store at -20°C.

Quality Control: The quality of the peptide was evaluated by reversed-phase HPLC and mass spectrometry.

Specificity: The peptide specifically blocks the signal of GATA-1 (phospho-Ser142) antibody (#11041) completely in Western blotting and IHC.

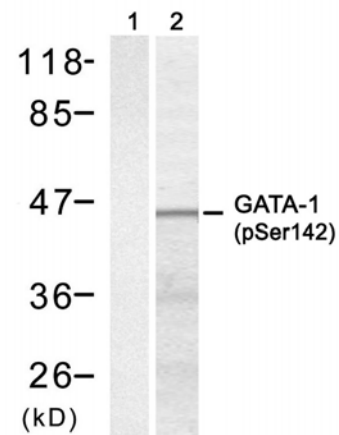
Applications: For Western blotting: add 10 µl of antibody and 10 µl of blocking peptide to 10 ml of antibody dilution buffer, and incubate at 4°C over night or at room temperature for 2 hours before allowing to react with the blot.

References: Zon LI, et al. (1990) Proc Natl Acad. Sci USA. 87: 668-672.
Trainor C D, et al. (1990) Nature. 343: 92-96.
Nichols K E, et al. (2000) Nat Genet. 24: 266-270.



P-Peptide - +

Immunohistochemical analysis of paraffin-embedded human breast carcinoma tissue using GATA-1 (phospho-Ser142) antibody (#11041).



P-Peptide + -

Western blot analysis of extracts from K562 cells using GATA-1 (phospho-Ser142) antibody (#11041).

For Research Use Only