



STAT3 (Phospho-Tyr705) Antibody Blocking Peptide

#51045

Catalog Number: 51045

Amount: 100µg/100µl

Form of Peptide: Peptide in 10 mM phosphate buffered saline (without Mg²⁺ and Ca²⁺), pH 7.4, 150mM NaCl, 0.1 mM EDTA, 1 mg/ml BSA, 5% DMF and 5% glycerol.

Peptide Information: The synthesized phosphopeptide was derived from human STAT3 around the phosphorylation site of tyrosine 705 (A-P-Y^P-L-K).

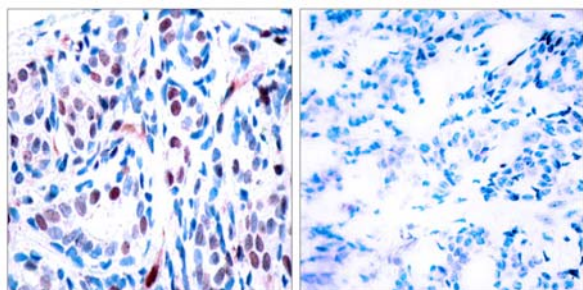
Storage: Store at -20°C.

Quality Control: The quality of the peptide was evaluated by reversed-phase HPLC and mass spectrometry.

Specificity: The peptide specifically blocks the signal of STAT3 (phospho-Tyr705) antibody (#11045) completely in Western blotting and IHC.

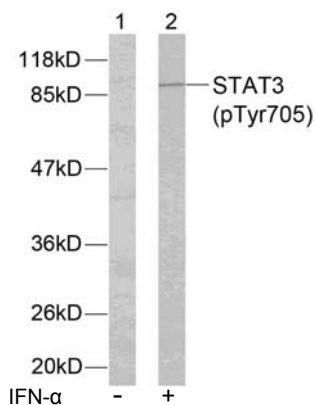
Applications: For Western blotting: add 10 µl of antibody and 10 µl of blocking peptide to 10 ml of antibody dilution buffer, and incubate at 4°C over night or at room temperature for 2 hours before allowing to react with the blot.

References: Fan G, et al. (2003) J Biol Chem. 278(52): 52432-52436.
Barry FA, et al. (2003) FEBS Lett. 553(1-2): 173-178.
Welsh, et al. (1996) Trends Cell Biol. 6: 274-279.
Srivastava A K, et al. (1998) Mol Cell Biochem. 182: 135-141.



P-Peptide - +

Immunohistochemical analysis of paraffin-embedded human breast carcinoma tissue using STAT3 (phospho-Tyr705) antibody (#11045).



Western blot analysis of extracts from HeLa cells using STAT3 (phospho-Tyr705) antibody (#11045).

For Research Use Only