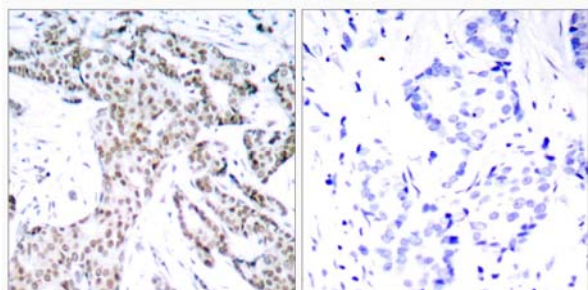




STAT3 (Phospho-Ser727) Antibody Blocking Peptide

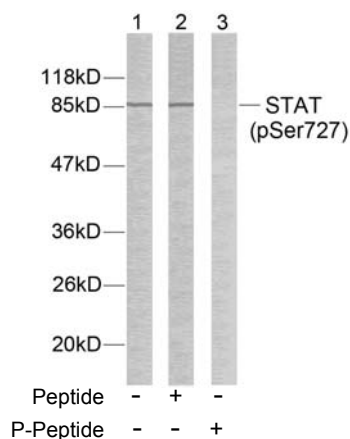
#51046

- Catalog Number:** 51046
- Amount:** 100µg/100µl
- Form of Peptide:** Peptide in 10 mM phosphate buffered saline (without Mg²⁺ and Ca²⁺), pH 7.4, 150mM NaCl, 0.1 mM EDTA, 1 mg/ml BSA, 5% DMF and 5% glycerol.
- Peptide Information:** The synthesized phosphopeptide was derived from human STAT3 around the phosphorylation site of serine 727 (P-M-S^P-P-R).
- Storage:** Store at -20°C.
- Quality Control:** The quality of the peptide was evaluated by reversed-phase HPLC and mass spectrometry.
- Specificity:** The peptide specifically blocks the signal of STAT3 (phospho-Ser727) antibody (#11046) completely in Western blotting and IHC.
- Applications:** For Western blotting: add 10 µl of antibody and 10 µl of blocking peptide to 10 ml of antibody dilution buffer, and incubate at 4°C over night or at room temperature for 2 hours before allowing to react with the blot.
- References:** Heim M H, (1999) J Recept Signal Transduct Res. 19: 75-120.
Takeda K, et al. (1997) Proc Natl Acad Sci USA. 94: 3801-3804.
Catlett-Falcone R, et al. (1999) Immunity. 10: 105-115.



P-Peptide - +

Immunohistochemical analysis of paraffin- embedded human breast carcinoma tissue using STAT3 (phospho-Ser727) antibody (#11046).



Western blot analysis of extracts from HeLa cells using STAT3 (phospho-Ser727) antibody (#11046).

For Research Use Only