



## STAT4 (Phospho-Tyr693) Antibody Blocking Peptide

#51047

**Catalog Number:** 51047

**Amount:** 100µg/100µl

**Form of Peptide:** Peptide in 10 mM phosphate buffered saline (without Mg<sup>2+</sup> and Ca<sup>2+</sup>), pH 7.4, 150mM NaCl, 0.1 mM EDTA, 1 mg/ml BSA, 5% DMF and 5% glycerol.

**Peptide Information:** The synthesized phosphopeptide was derived from human STAT4 around the phosphorylation site of tyrosine 693 (K-G-Y<sup>P</sup>-V-P).

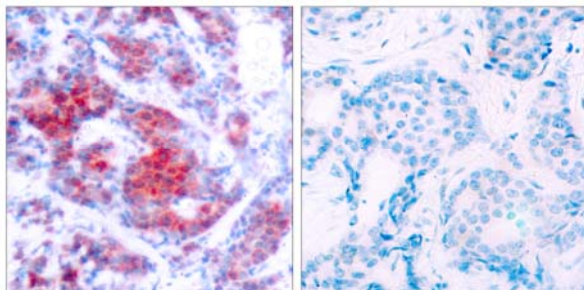
**Storage:** Store at -20°C.

**Quality Control:** The quality of the peptide was evaluated by reversed-phase HPLC and mass spectrometry.

**Specificity:** The peptide specifically blocks the signal of STAT4 (phospho-Tyr693) antibody (#11047) completely in Western blotting and IHC.

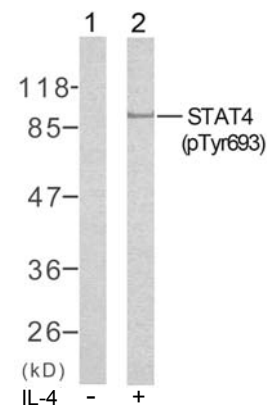
**Applications:** For Western blotting: add 10 µl of antibody and 10 µl of blocking peptide to 10 ml of antibody dilution buffer, and incubate at 4°C over night or at room temperature for 2 hours before allowing to react with the blot.

**References:** Strausberg R L, et al. (2002) Proc Natl Acad Sci U S A. 99(26):16899-16903.



P-Peptide                      -                      +

Immunohistochemical analysis of paraffin-embedded human breast carcinoma tissue using STAT4 (phospho-Tyr693) antibody (#11047).



Western blot analysis of extracts from HeLa cells using STAT4 (phospho-Tyr693) antibody (#11047).

**For Research Use Only**