



STAT6 (Phospho-Tyr641) Antibody Blocking Peptide

#51050

Catalog Number: 51050

Amount: 100µg/100µl

Form of Peptide: Peptide in 10 mM phosphate buffered saline (without Mg²⁺ and Ca²⁺), pH 7.4, 150mM NaCl, 0.1 mM EDTA, 1 mg/ml BSA, 5% DMF and 5% glycerol.

Peptide Information: The synthesized phosphopeptide was derived from human STAT6 around the phosphorylation site of Tyrosine 641 (R-G-Y^P-V-P).

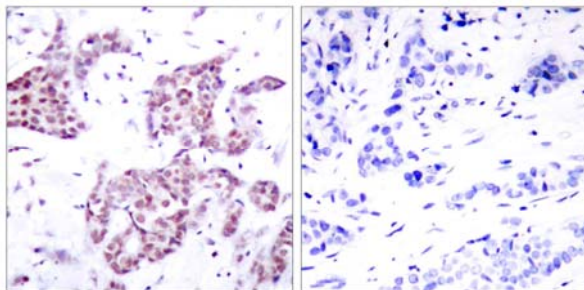
Storage: Store at -20°C.

Quality Control: The quality of the peptide was evaluated by reversed-phase HPLC and mass spectrometry.

Specificity: The peptide specifically blocks the signal of STAT6 (phospho-Tyr641) antibody (#11050) completely in Western blotting and IHC.

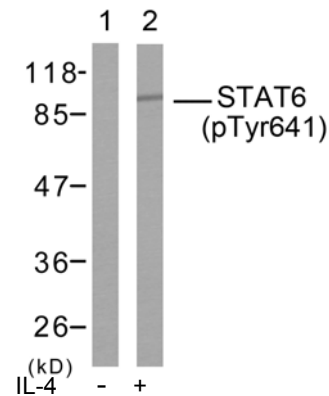
Applications: For Western blotting: add 10 µl of antibody and 10 µl of blocking peptide to 10 ml of antibody dilution buffer, and incubate at 4°C over night or at room temperature for 2 hours before allowing to react with the blot.

References: Nelms K, et al. (1999) Annu Rev Immunol. 17:701-738.
Malabarba M G, et al. (1996) Biochem. J. 319:865-872.
Hou J, et al. (1994) Science. 265:1701-1706.
Quelle F W, et al. (1995) Mol Cell Biol. 15: 3336-3343.



P-Peptide - +

Immunohistochemical analysis of paraffin-embedded human breast carcinoma tissue using STAT6 (phospho-Tyr641) antibody (#11050).



Western blot analysis of extract from HeLa cells, using STAT6 (phospho-Tyr641) antibody (#11050)

For Research Use Only