



STAT6 (Phospho-Thr645) Antibody Blocking Peptide

#51051

Catalog Number: 51051

Amount: 100µg/100µl

Form of Peptide: Peptide in 10 mM phosphate buffered saline (without Mg²⁺ and Ca²⁺), pH 7.4, 150mM NaCl, 0.1 mM EDTA, 1 mg/ml BSA, 5% DMF and 5% glycerol.

Peptide Information: The synthesized phosphopeptide was derived from human STAT6 around the phosphorylation site of threonine 645 (P-A-T^P-I-K).

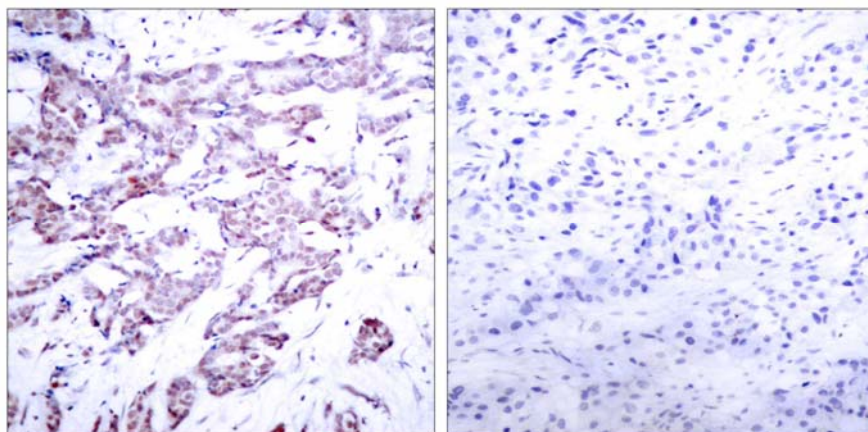
Storage: Store at -20°C.

Quality Control: The quality of the peptide was evaluated by reversed-phase HPLC and mass spectrometry.

Specificity: The peptide specifically blocks the signal of STAT6 (phospho-Thr645) antibody (#11051) completely in IHC.

Applications: For Western blotting: add 10 µl of antibody and 10 µl of blocking peptide to 10 ml of antibody dilution buffer, and incubate at 4°C over night or at room temperature for 2 hours before allowing to react with the blot.

References: Nelms K, et al. (1999) *Annu Rev Immunol.* 17:701-738.
Malabarba M G, et al. (1996) *Biochem. J.* 319:865-872.
Hou J, et al. (1994) *Science.* 265:1701-1706.
Quelle F W, et al. (1995) *Mol Cell Biol.* 15: 3336-3343.



P-Peptide

-

+

Immunohistochemical analysis of paraffin-embedded human breast carcinoma tissue using STAT6 (phospho-Thr645) antibody (#11051).

For Research Use Only