



ATF4 (Phospho-Ser245) Antibody Blocking Peptide

#51053

Catalog Number: 51053

Amount: 100µg/100µl

Form of Peptide: Peptide in 10 mM phosphate buffered saline (without Mg²⁺ and Ca²⁺), pH 7.4, 150mM NaCl, 0.1 mM EDTA, 1 mg/ml BSA, 5% DMF and 5% glycerol.

Peptide Information: The synthesized phosphopeptide was derived from human ATF4 around the phosphorylation site of serine 245 (N-R-S^P-L-P).

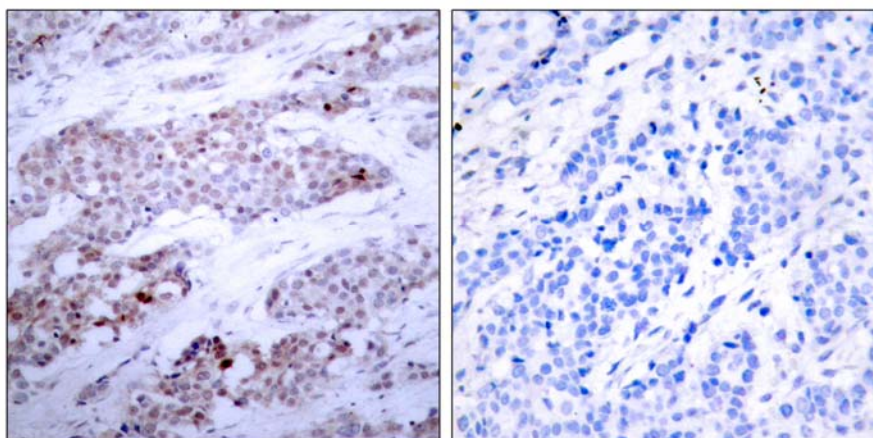
Storage: Store at -20°C.

Quality Control: The quality of the peptide was evaluated by reversed-phase HPLC and mass spectrometry.

Specificity: The peptide specifically blocks the signal of ATF4 (phospho-Ser245) antibody (#11053) completely in IHC.

Applications: For Western blotting: add 10 µl of antibody and 10 µl of blocking peptide to 10 ml of antibody dilution buffer, and incubate at 4°C over night or at room temperature for 2 hours before allowing to react with the blot.

References: Yang X, et al. (2004). Cell.117(3): 387-398.



P-Peptide

-

+

Immunohistochemical analysis of paraffin-embedded human breast carcinoma tissue, using ATF4 (phospho-Ser245) antibody (#11053).

For Research Use Only