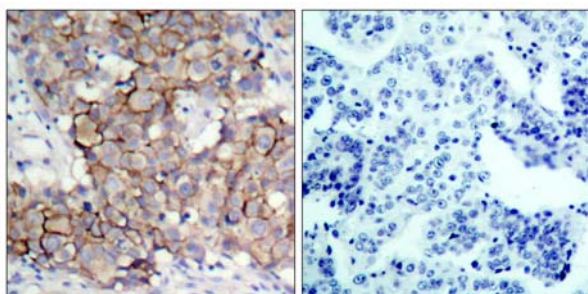




HER2 (Phospho-Tyr877) antibody Blocking peptide

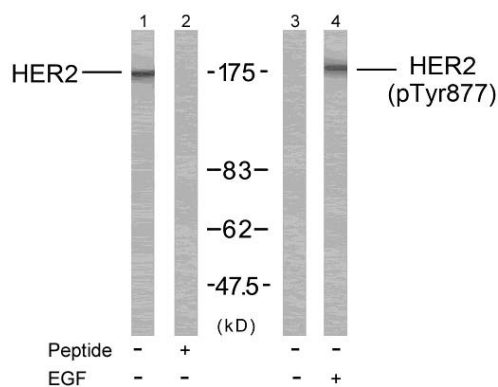
#51075

- Catalog Number:** 51075
- Amount:** 100µg/100µl
- Form of Peptide:** Peptide in 10 mM phosphate buffered saline (without Mg²⁺ and Ca²⁺), pH 7.4, 150mM NaCl, 0.1 mM EDTA, 1 mg/ml BSA, 5% DMF and 5% glycerol.
- Peptide Information:** The synthesized phosphopeptide was derived from human HER2 around the phosphorylation site of tyrosine 877 (T-E-YP-H-A).
- Storage:** Store at -20°C.
- Quality Control:** The quality of the peptide was evaluated by reversed-phase HPLC and mass spectrometry.
- Specificity:** The peptide specifically blocks the signal of HER2 (Phospho-Tyr877) antibody(#11075) completely in Western blotting and IHC.
- Applications:** For Western blotting: add 10 µl of antibody and 10 µl of blocking peptide to 10 ml of antibody dilution buffer, and incubate at 4°C over night or at room temperature for 2 hours before allowing to react with the blot.
- References:** Dittadi, R. et al. (2000) J. Natl. Cancer Inst. 92, 1443-1444.
Muthuswamy, S. K. et al. (1999) Mol. Cell. Biol. 19, 6845-6857.
Qian, X. et al. (1994) Proc. Natl. Acad. Sci. USA 91, 1500-1504.



P-Peptide - +

Immunohistochemical analysis of paraffin-embedded human breast carcinoma tissue, using HER2 (phospho-Tyr877) antibody (#11075).



Western blot analysis of extract from MDA-MB-231 cells treated or untreated with EGF using HER2 (Ab-877) Antibody (#21070, Line 1 and 2) and HER2 (phospho-Tyr877) antibody (#11075, Line 3 and 4).

For Research Use Only