



## HER2 (Phospho-Tyr1221/Tyr1222) antibody Blocking peptide

#51076

**Catalog Number:** 51076

**Amount:** 100µg/100µl

**Form of Peptide:** Peptide in 10 mM phosphate buffered saline (without Mg<sup>2+</sup> and Ca<sup>2+</sup>), pH 7.4, 150mM NaCl, 0.1 mM EDTA, 1 mg/ml BSA, 5% DMF and 5% glycerol.

**Peptide Information:** The synthesized phosphopeptide was derived from human HER2 around the phosphorylation site of tyrosine1221/1222 (N-L-Y<sup>P</sup>-Y<sup>P</sup>-W).

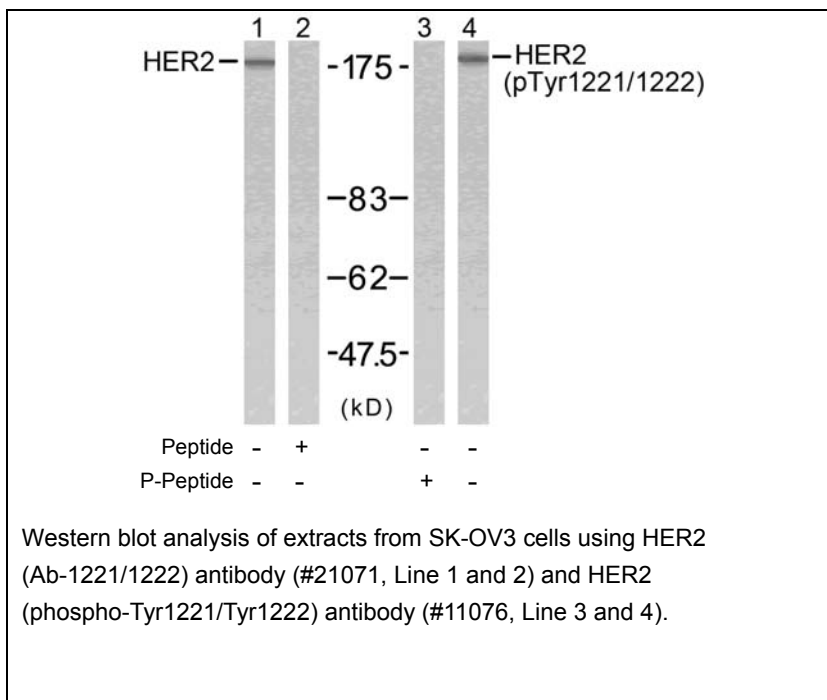
**Storage:** Store at -20°C.

**Quality Control:** The quality of the peptide was evaluated by reversed-phase HPLC and mass spectrometry.

**Specificity:** The peptide specifically blocks the signal of HER2 (Phospho-Tyr1221/Tyr1222) antibody (#11076) completely in Western blotting.

**Applications:** For Western blotting: add 10 µl of antibody and 10 µl of blocking peptide to 10 ml of antibody dilution buffer, and incubate at 4°C over night or at room temperature for 2 hours before allowing to react with the blot.

**References:** Marone R, et al. (2004) Nat Cell Biol; 6(6): 515-22.  
Ren Z, et al. (2002) J Biol Chem; 277(41): 38486-93.



**For Research Use Only**