



## PKD/PKC $\mu$ (Phospho-Ser738) antibody Blocking peptide

#51078

**Catalog Number:** 51078

**Amount:** 100 $\mu$ g/100 $\mu$ l

**Form of Peptide:** Peptide in 10 mM phosphate buffered saline (without Mg<sup>2+</sup> and Ca<sup>2+</sup>), pH 7.4, 150mM NaCl, 0.1 mM EDTA, 1 mg/ml BSA, 5% DMF and 5% glycerol.

**Peptide Information:** The synthesized phosphopeptide was derived from human PKD/PKC $\mu$  around the phosphorylation site of serine 738 (E-K-S<sup>P</sup>-F-R).

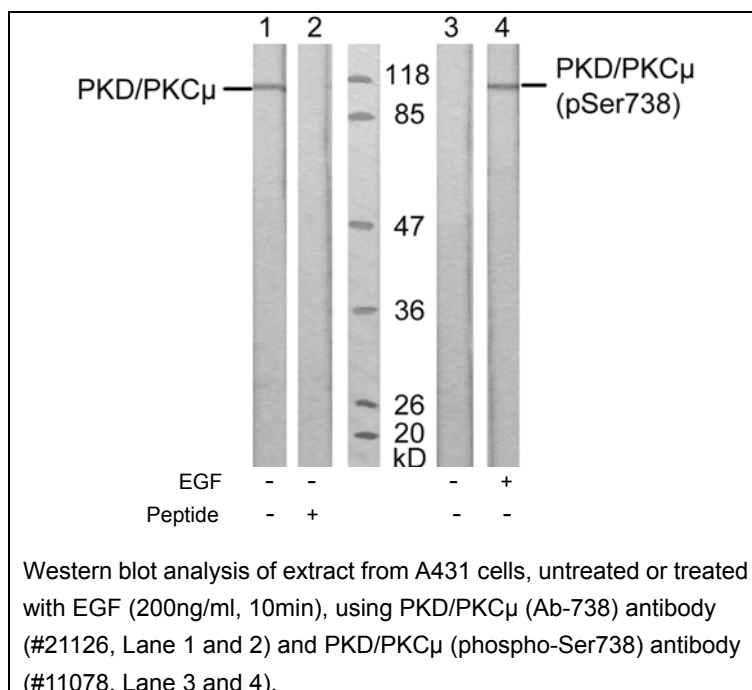
**Storage:** Store at -20°C.

**Quality Control:** The quality of the peptide was evaluated by reversed-phase HPLC and mass spectrometry.

**Specificity:** The peptide specifically blocks the signal of PKD/PKC $\mu$  (Phospho-Ser738) antibody (#11078) completely in Western blotting.

**Applications:** For Western blotting: add 10  $\mu$ l of antibody and 10  $\mu$ l of blocking peptide to 10 ml of antibody dilution buffer, and incubate at 4°C over night or at room temperature for 2 hours before allowing to react with the blot.

**References:** Storz P, et al. Mol Cell Biol. 2004 Apr; 24(7): 2614-2626.  
Storz P, et al. Mol Cell Biol. 2005 Oct; 25(19): 8520-8530.  
Zhang W, et al. J Biol Chem 2005 May 13; 280(19): 19036-19044



**For Research Use Only**