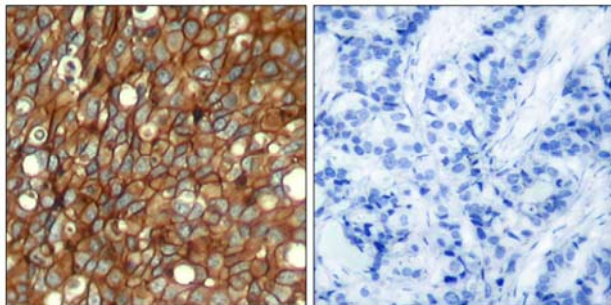




# HER2 (Phospho-Tyr1248) antibody Blocking peptide

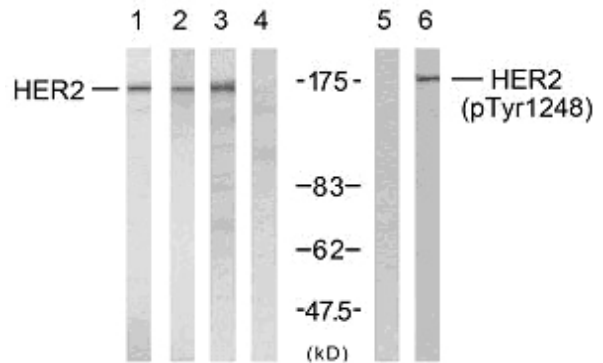
#51079

- Catalog Number:** 51079
- Amount:** 100µg/100µl
- Form of Peptide:** Peptide in 10 mM phosphate buffered saline (without Mg<sup>2+</sup> and Ca<sup>2+</sup>), pH 7.4, 150mM NaCl, 0.1 mM EDTA, 1 mg/ml BSA, 5% DMF and 5% glycerol.
- Peptide Information:** The synthesized phosphopeptide was derived from human HER2 around the phosphorylation site of tyrosine1248 (P-E-Y<sup>P</sup>-L-G).
- Storage:** Store at -20°C.
- Quality Control:** The quality of the peptide was evaluated by reversed-phase HPLC and mass spectrometry.
- Specificity:** The peptide specifically blocks the signal of HER2 (Phospho-Tyr1248) antibody (#11079) completely in Western blotting and IHC.
- Applications:** For Western blotting: add 10 µl of antibody and 10 µl of blocking peptide to 10 ml of antibody dilution buffer, and incubate at 4°C over night or at room temperature for 2 hours before allowing to react with the blot.
- References:** Ramsauer VP, et al. (2003) J Biol Chem; 278(32): 30142-7.  
Jepson S, et al. (2002) Oncogene; 21(49): 7524-32.  
Ren Z, et al. (2002) J Biol Chem; 277(41): 38486-93.  
Eppenberger-Castori S, et al. (2001) J Clin Oncol; 19(3): 645-56.



P-Peptide - +

Immunohistochemical analysis of paraffin-embedded human breast carcinoma tissue using HER2 (phospho-Tyr1248) antibody (#11079).



	A2780 HeLa				SK-OV3	
P-peptide	-	-	-	-	+	-
Peptide	-	-	-	+	-	-

Western blot analysis using HER2 (Ab-1248) antibody (#21072, Line 1, 2, 3 and 4) and HER2 (phospho-Tyr1248) antibody (#11079, Line 5 and 6).

**For Research Use Only**