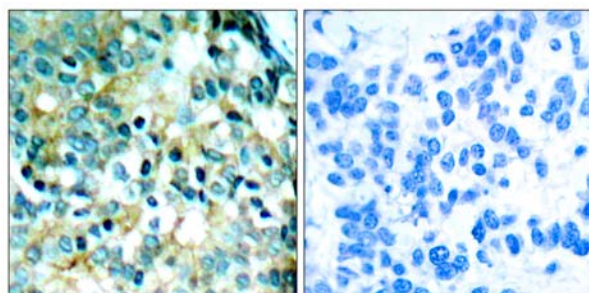




Src(Phospho-Tyr418) antibody Blocking peptide

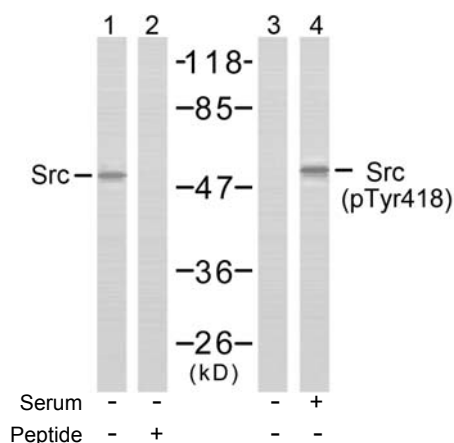
#51091

- Catalog Number:** 51091
- Amount:** 100µg/100µl
- Form of Peptide:** Peptide in 10 mM phosphate buffered saline (without Mg²⁺ and Ca²⁺), pH 7.4, 150mM NaCl, 0.1 mM EDTA, 1 mg/ml BSA, 5% DMF and 5% glycerol.
- Peptide Information:** The synthesized phosphopeptide was derived from human Src around the phosphorylation site of tyrosine 418 (N-E-Y^P-T-A).
- Storage:** Store at -20°C.
- Quality Control:** The quality of the peptide was evaluated by reversed-phase HPLC and mass spectrometry.
- Specificity:** The peptide specifically blocks the signal of Src(Phospho-Tyr418) antibody (#11091) completely in Western blotting and IHC.
- Applications:** For Western blotting: add 10 µl of antibody and 10 µl of blocking peptide to 10 ml of antibody dilution buffer, and incubate at 4°C over night or at room temperature for 2 hours before allowing to react with the blot.
- References:** Dufilho M, et al. (2005) J Biol Chem. 280(43):35999-36006.
Sanders MA, et al. (2005) J Biol Chem. 280(25): 23516-23522.
Murugappan S, et al. (2005) Blood. 106(2):550-557.
Gu JJ, et al. (2005) Blood. 105(8): 3270-3277.



P-Peptide - +

Immunohistochemical analysis of paraffin- embedded human breast carcinoma tissue using Src (phospho-Tyr418) antibody (#11091).



Western blot analysis of extracts from COLO205 cells using Src (Ab-418) antibody (#21115, Lane 1 and 2) and Src (phospho-Tyr418) antibody (#11091, Lane 3 and 4).

For Research Use Only