



p53 (Phospho-Ser6) antibody Blocking peptide

#51092

Catalog Number: 51092

Amount: 100µg/100µl

Form of Peptide: Peptide in 10 mM phosphate buffered saline (without Mg²⁺ and Ca²⁺), pH 7.4, 150mM NaCl, 0.1 mM EDTA, 1 mg/ml BSA, 5% DMF and 5% glycerol.

Peptide Information: The synthesized phosphopeptide was derived from human p53 around the phosphorylation site of serine 6 (P-Q-S^P-D-P).

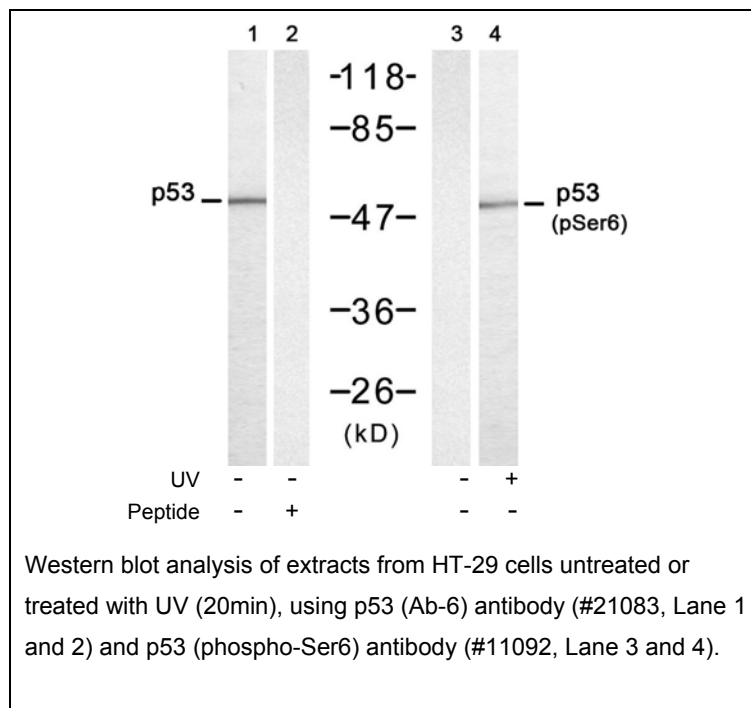
Storage: Store at -20°C.

Quality Control: The quality of the peptide was evaluated by reversed-phase HPLC and mass spectrometry.

Specificity: The peptide specifically blocks the signal of p53 (Phospho-Ser6) antibody (#11092) completely in Western blotting.

Applications: For Western blotting: add 10 µl of antibody and 10 µl of blocking peptide to 10 ml of antibody dilution buffer, and incubate at 4°C over night or at room temperature for 2 hours before allowing to react with the blot.

References: Lin T, et al. (2005) Nat Cell Biol; 7(2): 165-71.
Vega FM, et al. (2004) Mol Cell Biol; 24(23): 10366-80.
Li J, et al. (2004) J Biol Chem; 279(40): 41275-9.
Wang J, et al. (2004) J Biol Chem; 279(38): 39584-92.



For Research Use Only