



Tau(Phospho-Ser356) antibody Blocking peptide

#51101

Catalog Number: 51101

Amount: 100µg/100µl

Form of Peptide: Peptide in 10 mM phosphate buffered saline (without Mg²⁺ and Ca²⁺), pH 7.4, 150mM NaCl, 0.1 mM EDTA, 1 mg/ml BSA, 5% DMF and 5% glycerol.

Peptide Information: The synthesized phosphopeptide was derived from human Tau around the phosphorylation site of serine 356 (I-G-S^P-L-D).

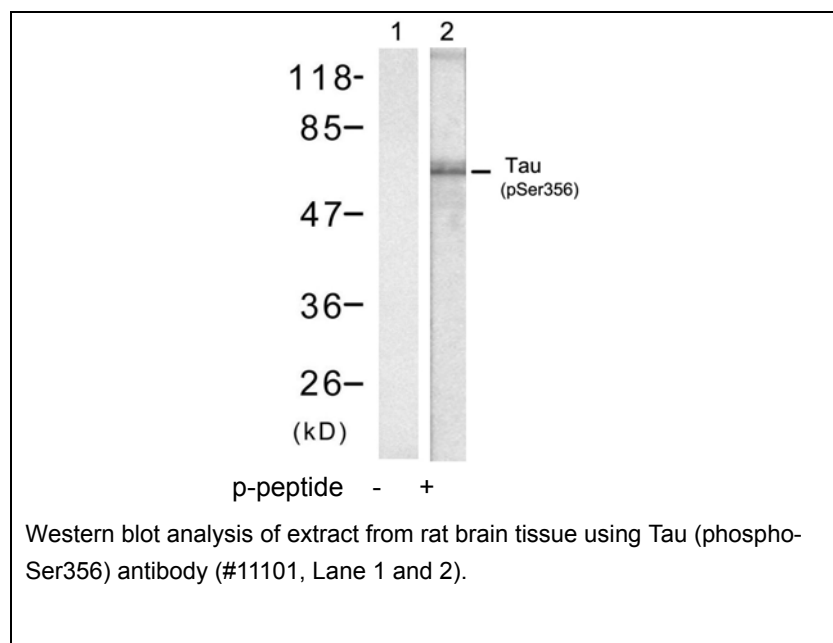
Storage: Store at -20°C.

Quality Control: The quality of the peptide was evaluated by reversed-phase HPLC and mass spectrometry.

Specificity: The peptide specifically blocks the signal of Tau(Phospho-Ser356) antibody (#11101) completely in Western blotting.

Applications: For Western blotting: add 10 µl of antibody and 10 µl of blocking peptide to 10 ml of antibody dilution buffer, and incubate at 4°C over night or at room temperature for 2 hours before allowing to react with the blot.

References: Puig B, et al. (2005) Acta Neuropathol (Berl). 110(3):261-268.
DeGiorgis JA, et al. (2005) J Proteome Res. 4(2): 306-315.
Alonso Adel C, et al. (2004) J Biol Chem. 279(33): 34873-34881.
Kyriakis J M, et al. (1994) Nature. 369: 156-160..



For Research Use Only