



## Tau(Phospho-Thr181) antibody Blocking peptide

#51107

**Catalog Number:** 51107

**Amount:** 100µg/100µl

**Form of Peptide:** Peptide in 10 mM phosphate buffered saline (without Mg<sup>2+</sup> and Ca<sup>2+</sup>), pH 7.4, 150mM NaCl, 0.1 mM EDTA, 1 mg/ml BSA, 5% DMF and 5% glycerol.

**Peptide Information:** The synthesized phosphopeptide was derived from human Tau around the phosphorylation site of threonine 181 (P-K-T<sup>P</sup>-P-P).

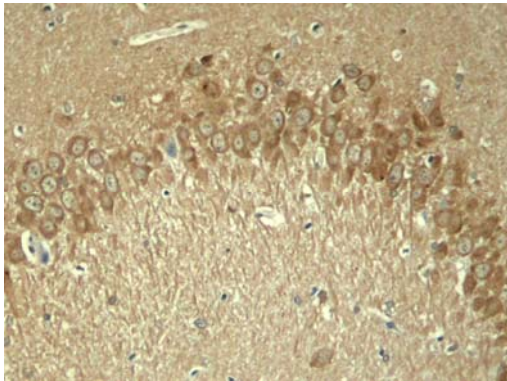
**Storage:** Store at -20°C.

**Quality Control:** The quality of the peptide was evaluated by reversed-phase HPLC and mass spectrometry.

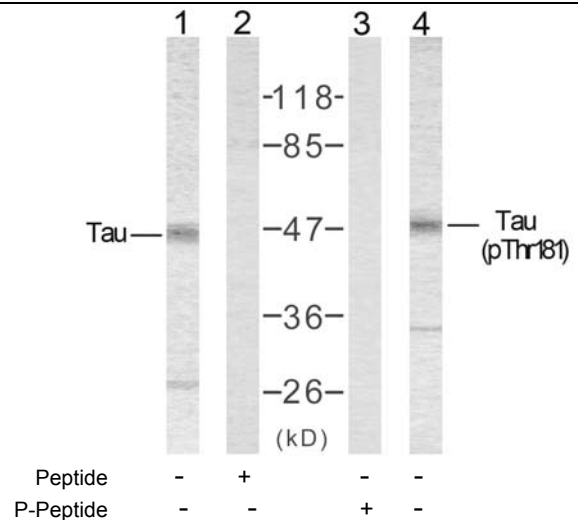
**Specificity:** The peptide specifically blocks the signal of Tau(Phospho-Thr181) antibody (#11107) completely in Western blotting and IHC.

**Applications:** For Western blotting: add 10 µl of antibody and 10 µl of blocking peptide to 10 ml of antibody dilution buffer, and incubate at 4°C over night or at room temperature for 2 hours before allowing to react with the blot.

**References:** Puig B, et al.(2005) Acta Neuropathol (Berl). 110(3):261-268.  
Pérez M, et al.(2005) Neuroscience. 130(2): 339-347.  
Fellgiebel A, et al.(2004) Biol Psychiatry. 56(4): 279-283.  
del C Alonso A, et al.(2004) J Biol Chem. 279(33): 34873-34881.



Immunohistochemical analysis of paraffin-embedded rat hippocampal region tissue from a model with Alzheimer's Disease using Tau (phospho-Thr181) antibody (#11107).



Western blot analysis of extract from mouse brain tissue using Tau (Ab-181) antibody (#21096, Lane 1 and 2) and Tau (phospho-Thr181) antibody (#11107, Lane 3 and 4).

**For Research Use Only**