



Tau (Phospho-Thr205) Antibody Blocking Peptide

#51108

Catalog Number: 51108

Amount: 100µg/100µl

Form of Peptide: Peptide in 10 mM phosphate buffered saline (without Mg²⁺ and Ca²⁺), pH 7.4, 150mM NaCl, 0.1 mM EDTA, 1 mg/ml BSA, 5% DMF and 5% glycerol.

Peptide Information: The synthesized phosphopeptide was derived from human Tau around the phosphorylation site of threonine 205 (P-G-T^P-P-G).

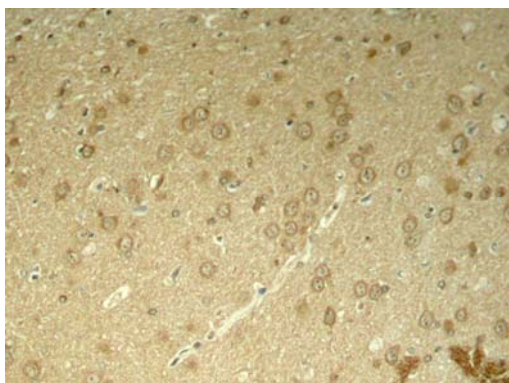
Storage: Store at -20°C.

Quality Control: The quality of the peptide was evaluated by reversed-phase HPLC and mass spectrometry.

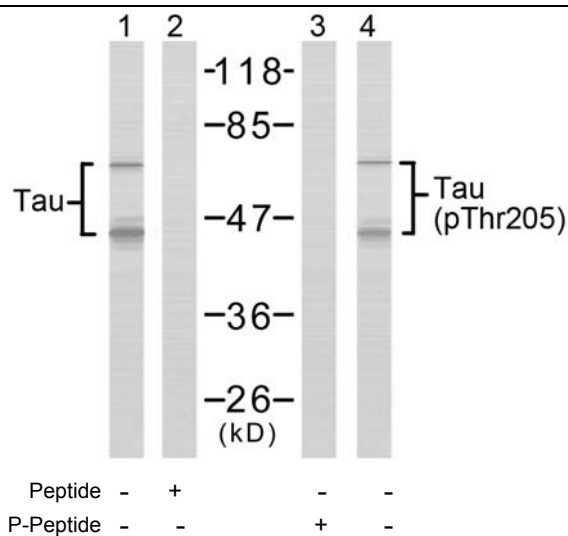
Specificity: The peptide specifically blocks the signal of Tau (phospho-Thr205) antibody (#11108) completely in Western blotting and IHC.

Applications: For Western blotting: add 10 µl of antibody and 10 µl of blocking peptide to 10 ml of antibody dilution buffer, and incubate at 4°C over night or at room temperature for 2 hours before allowing to react with the blot.

References: del C Alonso A, et al. (2004) J Biol Chem; 279(33): 34873-81.
Li G, Yin H, Kuret J (2004) J Biol Chem; 279(16): 15938-45.
Giasson BI, et al. (2002) Biochemistry; 41(51): 15376-87.
Liu F, et al. (2002) FEBS Lett; 530(1-3): 209.



Immunohistochemical analysis of paraffin-embedded rat hippocampal region tissue from a model with Alzheimer's Disease using Tau (phospho-Thr205) antibody (#11108).



Western blot analysis of extracts from mouse brain tissue using Tau (Ab-205) antibody (#21097, Line 1 and 2) and Tau (phospho-Thr205) antibody (#11108, Line 3 and 4).

For Research Use Only