



Tau (Phospho-Ser214) Antibody Blocking Peptide

#51109

Catalog Number: 51109

Amount: 100µg/100µl

Form of Peptide: Peptide in 10 mM phosphate buffered saline (without Mg²⁺ and Ca²⁺), pH 7.4, 150mM NaCl, 0.1 mM EDTA, 1 mg/ml BSA, 5% DMF and 5% glycerol.

Peptide Information: The synthesized phosphopeptide was derived from human Tau around the phosphorylation site of serine 214 (T-P-S^P-L-P).

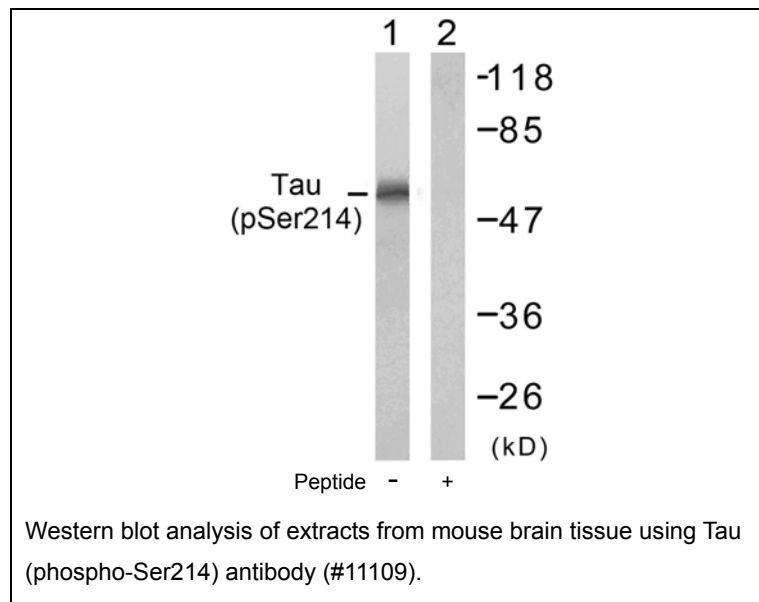
Storage: Store at -20°C.

Quality Control: The quality of the peptide was evaluated by reversed-phase HPLC and mass spectrometry.

Specificity: The peptide specifically blocks the signal of Tau (phospho-Ser214) antibody (#11109) completely in Western blotting.

Applications: For Western blotting: add 10 µl of antibody and 10 µl of blocking peptide to 10 ml of antibody dilution buffer, and incubate at 4°C over night or at room temperature for 2 hours before allowing to react with the blot.

References: Smet C, et al. (2005) FEBS Lett; 579(19): 4159-64.
Puig B, et al. (2005) Acta Neuropathol (Berl).
Gvtz J, et al. (2001) Science; 293(5534): 1491-5.
Illenberger S, et al. (1998) Mol Biol Cell; 9(6): 1495-512.



For Research Use Only