



Tau (Phospho-Thr231) Antibody Blocking Peptide

#51110

Catalog Number: 51110

Amount: 100µg/100µl

Form of Peptide: Peptide in 10 mM phosphate buffered saline (without Mg²⁺ and Ca²⁺), pH 7.4, 150mM NaCl, 0.1 mM EDTA, 1 mg/ml BSA, 5% DMF and 5% glycerol.

Peptide Information: The synthesized phosphopeptide was derived from human Tau around the phosphorylation site of threonine 231 (V-R-T^P-P-P).

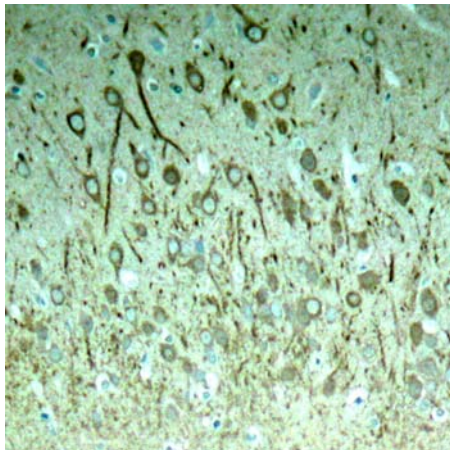
Storage: Store at -20°C.

Quality Control: The quality of the peptide was evaluated by reversed-phase HPLC and mass spectrometry.

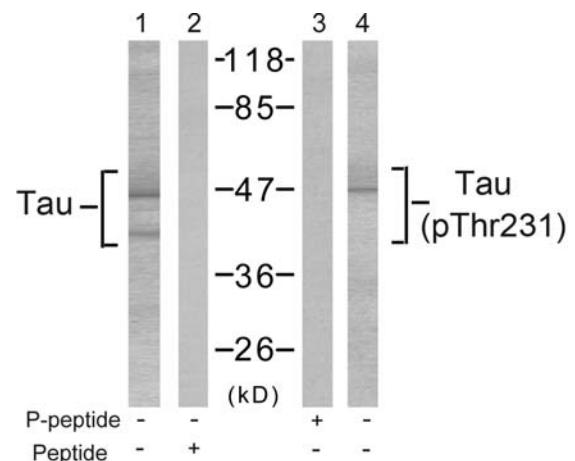
Specificity: The peptide specifically blocks the signal of Tau (phospho-Thr231) antibody (#11110) completely in Western blotting and IHC.

Applications: For Western blotting: add 10 µl of antibody and 10 µl of blocking peptide to 10 ml of antibody dilution buffer, and incubate at 4°C over night or at room temperature for 2 hours before allowing to react with the blot.

References: Yen S.H.et.al. (1997) Neurochem. 69:1709-1719.
Beausoleil S.A.et.al. (2004) Proc. Natl. Acad. Sci. U.S.A. 101:12130-12135.
Wintjens R.et.al. (2001) Biol. Chem. 276:25150-25156.
Babu J.R.et.al.(2005) Neurochem. 94:192-203.
Goedert M., Spillantini M.G. (2000) Biochim. Biophys. Acta 1502:110-121.



Immunohistochemical analysis of paraffin-embedded rat hippocampal region tissue from a model with Alzheimer's Disease using Tau (phospho-Thr231) antibody (#11110).



Western blot analysis of extract from mouse brain tissue using Tau (Ab-231) Antibody (#21099, Lane 1 and 2) and Tau (phospho-Thr231) antibody (#11110, Lane 3 and 4).

For Research Use Only