



## Tau (Phospho-Ser262) Antibody Blocking Peptide

#51111

**Catalog Number:** 51111

**Amount:** 100µg/100µl

**Form of Peptide:** Peptide in 10 mM phosphate buffered saline (without Mg<sup>2+</sup> and Ca<sup>2+</sup>), pH 7.4, 150mM NaCl, 0.1 mM EDTA, 1 mg/ml BSA, 5% DMF and 5% glycerol.

**Peptide Information:** The synthesized phosphopeptide was derived from human Tau around the phosphorylation site of serine 262 (I-G-S<sup>P</sup>-T-E).

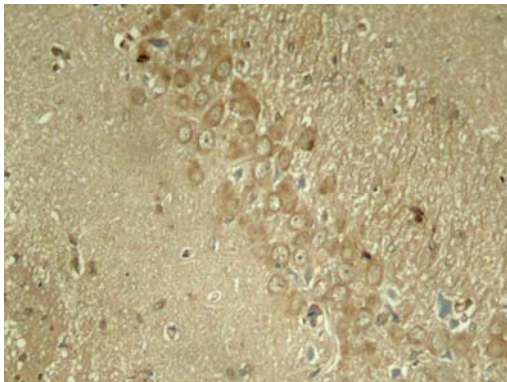
**Storage:** Store at -20°C.

**Quality Control:** The quality of the peptide was evaluated by reversed-phase HPLC and mass spectrometry.

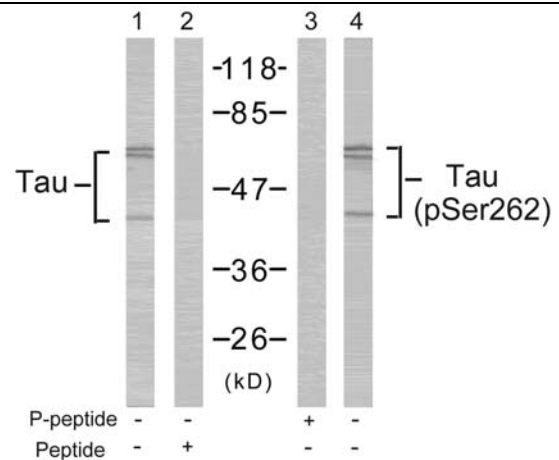
**Specificity:** The peptide specifically blocks the signal of Tau (phospho-Ser262) antibody (#11111) completely in Western blotting and IHC.

**Applications:** For Western blotting: add 10 µl of antibody and 10 µl of blocking peptide to 10 ml of antibody dilution buffer, and incubate at 4°C over night or at room temperature for 2 hours before allowing to react with the blot.

**References:** Timm T, et al. (2003) EMBO J; 22(19): 5090-5101.



Immunohistochemical analysis of paraffin-embedded rat hippocampal region tissue from a model with Alzheimer's Disease using Tau (phospho-Ser262) antibody (#11111).



Western blot analysis of extracts from mouse brain tissue using Tau (Ab-262) antibody (#21100, Lane 1 and 2) and Tau (phospho-Ser262) antibody (#11111, Lane 3 and 4).

**For Research Use Only**