



## BRCA1 (Phospho-Ser1524) Antibody Blocking Peptide

#51117

**Catalog Number:** 51117

**Amount:** 100µg/100µl

**Form of Peptide:** Peptide in 10 mM phosphate buffered saline (without Mg<sup>2+</sup> and Ca<sup>2+</sup>), pH 7.4, 150mM NaCl, 0.1 mM EDTA, 1 mg/ml BSA, 5% DMF and 5% glycerol.

**Peptide Information:** The synthesized phosphopeptide was derived from human BRCA1 around the phosphorylation site of serine 1524 (Y-P-S<sup>P</sup>-Q-E).

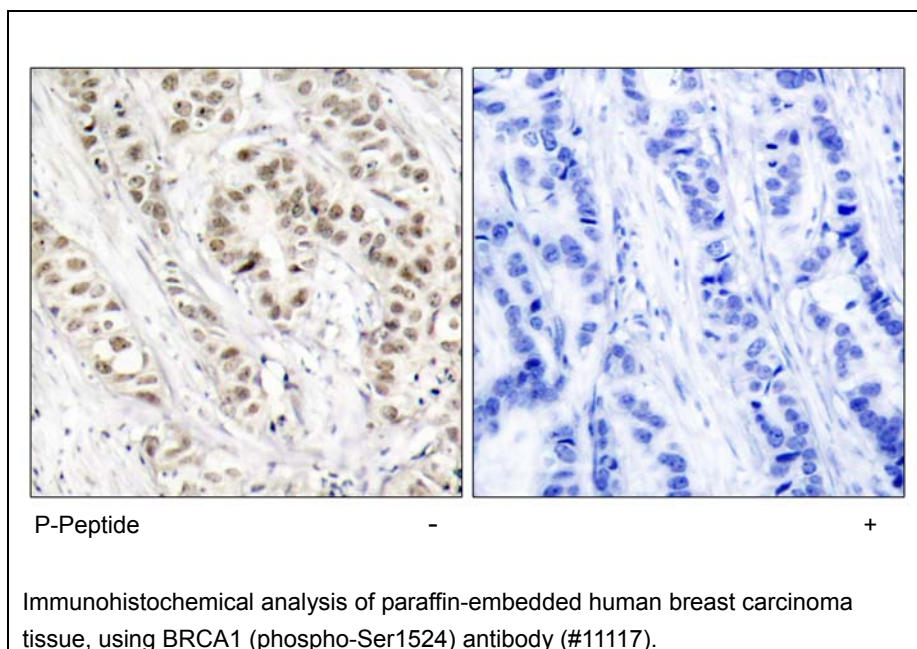
**Storage:** Store at -20°C.

**Quality Control:** The quality of the peptide was evaluated by reversed-phase HPLC and mass spectrometry.

**Specificity:** The peptide specifically blocks the signal of BRCA1 (phospho-Ser1524) antibody (#11117) completely in IHC.

**Applications:** For Western blotting: add 10 µl of antibody and 10 µl of blocking peptide to 10 ml of antibody dilution buffer, and incubate at 4°C over night or at room temperature for 2 hours before allowing to react with the blot.

**References:** Lin SY, et al. (2004) Proc Natl Acad Sci U S A, 101(17): 6484-6489  
Zhang J, et al. (2004) Mol Cell Biol; 24(2): 708-718  
Beger C, et al. (2001) Proc Natl Acad Sci U S A; 98(1): 130-135  
Gardner K, et al. (2001) Breast Cancer Res; 3(1): 11-13  
Zheng L, et al. (2001) Proc Natl Acad Sci U S A; 98(17): 9587-9592



**For Research Use Only**