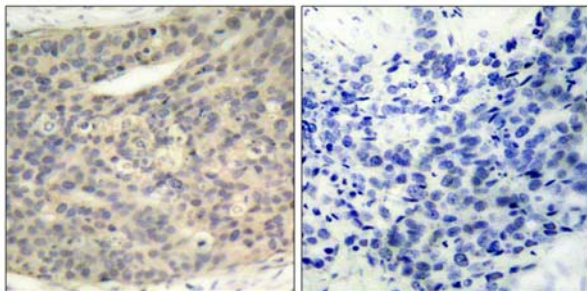




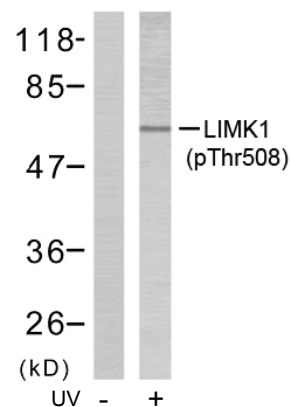
LIMK1 (Phospho-Thr508) Antibody Blocking Peptide

#51126

- Catalog Number:** 51126-1, 51126-2
Amount: 50µg/50µl, 100µg/100µl
Form of Peptide : Peptide in phosphate buffered saline (without Mg²⁺ and Ca²⁺), pH 7.4, 150mM NaCl, 0.02% sodium azide and 50% glycerol.
Storage: Store at -20°C.
Quality Control: The quality of the peptide was evaluated by reversed-phase HPLC and mass spectrometry.
Peptide Information : The synthesized phosphopeptide was derived from human LIMK1 around the phosphorylation site of threonine 508 (R-Y-T^P-V-V).
Specificity: The peptide specifically blocks the signal of LIMK1 (phospho-Thr508) antibody (#11126) completely in Western blotting and IHC.
Applications: For Western blotting: add 10 µl of antibody and 10 µl of blocking peptide to 10 ml of antibody dilution buffer, and incubate at 4°C over night or at room temperature for 2 hours before allowing to react with the blot.
Swiss-Prot No. : P53667
References: Soosairajah J, et al. (2005) EMBO J.
Ohashi K, et al. (2000) J Biol Chem; 275(5): 3577-82.
Edwards DC, et al. (1999) Nat Cell Biol; 1(5): 253-9.



P-Peptide - +
Immunohistochemical analysis of paraffin- embedded human breast carcinoma tissue, using LIMK1 (phospho-Thr508) antibody (#11126).



Western blot analysis of extract from NIH/3T3 cells treated or untreated with UV (60min), using LIMK1 (phospho-Thr508) antibody (#11126).

For Research Use Only