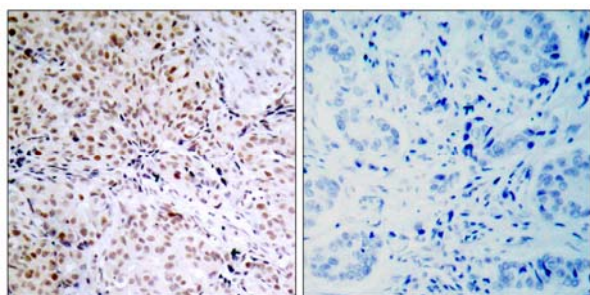


Rb (Phospho-Ser795) Antibody Blocking Peptide

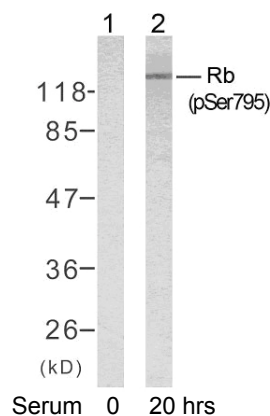
#51130

- Catalog Number:** 51130-1, 51130-2
- Amount:** 50µg/50µl, 100µg/100µl
- Form of Peptide :** Peptide in phosphate buffered saline (without Mg²⁺ and Ca²⁺), pH 7.4, 150mM NaCl, 0.02% sodium azide and 50% glycerol.
- Storage:** Store at -20°C.
- Quality Control:** The quality of the peptide was evaluated by reversed-phase HPLC and mass spectrometry.
- Peptide Information :** The synthesized phosphopeptide was derived from human Rb around the phosphorylation site of serine 795 (P-S-S^P-P-L).
- Specificity:** The peptide specifically blocks the signal of Rb (phospho-Ser795) antibody (#11130) completely in Western blotting and IHC.
- Applications:** For Western blotting: add 10 µl of antibody and 10 µl of blocking peptide to 10 ml of antibody dilution buffer, and incubate at 4°C over night or at room temperature for 2 hours before allowing to react with the blot.
- Swiss-Prot No. :** P06400
- References:** Rubin SM, et al. (2005) Cell.123 (6): 1093-1106.
Wallick CJ, et al. (2005) Oncogene.24 (36): 5606-5618.
Leibundgut K, et al. (2005) Stem Cells. 23(7):1002-1011.
Roesch A, et al. (2005) Mod Pathol.18 (4): 565-572.



P-Peptide - +

Immunohistochemical analysis of paraffin-embedded human breast carcinoma tissue, using Rb (phospho-Ser795) antibody (#11130).



Western blot analysis of extracts from K562 cells untreated or treated with 10% serum after 48 hours of starvation, using Rb (phospho-Ser795) antibody (#11130).