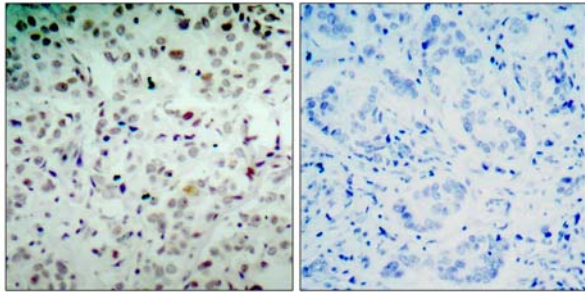




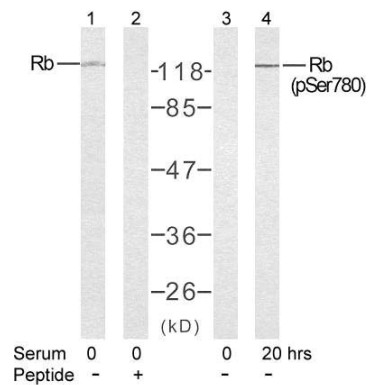
Rb (Phospho-Ser780)Antibody Blocking Peptide

- Catalog Number:** 51132-1, 51132-2
- Amount:** 50µg/50µl, 100µg/100µl
- Form of Peptide :** Peptide in phosphate buffered saline (without Mg²⁺ and Ca²⁺), pH 7.4, 150mM NaCl, 0.02% sodium azide and 50% glycerol.
- Storage:** Store at -20°C.
- Quality Control:** The quality of the peptide was evaluated by reversed-phase HPLC and mass spectrometry.
- Peptide Information :** The synthesized phosphopeptide was derived from human Rb around the phosphorylation site of serine 780 (T-L-S^P-P-I).
- Specificity:** The peptide specifically blocks the signal of Rb (phospho-Ser780) antibody (#11132) completely in Western blotting and IHC.
- Applications:** For Western blotting: add 10 µl of antibody and 10 µl of blocking peptide to 10 ml of antibody dilution buffer, and incubate at 4°C over night or at room temperature for 2 hours before allowing to react with the blot.
- Swiss-Prot No. :** P06400
- References:** Roesch A, et al.(2005) Mod Pathol. 18(4): 565-572.
Huang H, et al.(2004)Oncogene. 23(12): 2161-2176.
Kitagawa M, et al.(1996)EMBO J. 15(24): 7060-7069.



P-Peptide - +

Immunohistochemical analysis of paraffin- embedded human breast carcinoma tissue, using Rb (phospho-Ser780) antibody (#11132).



Western blot analysis of extract from K562 cells untreated or treated with 10% serum after 48 hours of starvation, using Rb (Ab-780) antibody (#21110, Lane 1 and 2) and Rb (phospho-Ser780) antibody (#11132, Lane 3 and 4).