

CDC2 (Phospho-Thr161) Antibody Blocking Peptide

#51134

Catalog Number: 51134-1, 51134-2

Amount: 50µg/50µl, 100µg/100µl

Form of Peptide : Peptide in phosphate buffered saline (without Mg²⁺ and Ca²⁺), pH 7.4, 150mM NaCl, 0.02% sodium azide and 50% glycerol.

Storage: Store at -20°C.

Quality Control: The quality of the peptide was evaluated by reversed-phase HPLC and mass spectrometry.

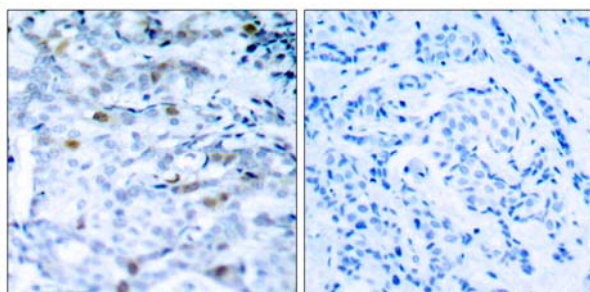
Peptide Information : The synthesized phosphopeptide was derived from human CDC2 around the phosphorylation site of threonine161 (T-Y-T^P-H-E).

Specificity: The peptide specifically blocks the signal of CDC2 (phospho-Thr161) antibody(#11134) completely in Western blotting and IHC.

Applications: For Western blotting: add 10 µl of antibody and 10 µl of blocking peptide to 10 ml of antibody dilution buffer, and incubate at 4°C over night or at room temperature for 2 hours before allowing to react with the blot.

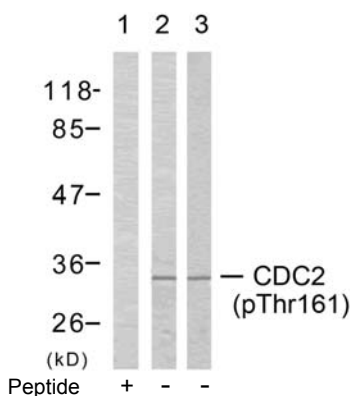
Swiss-Prot No. : P06493

References: Ukomadu C, et al.(2003) J Biol Chem; 278(7): 4840-6.
Morris MC, et al.(2002)J Biol Chem; 277(26): 23847-53.
Brown NR, et al.(1999)J Biol Chem; 274(13): 8746-56.
Liu Y, et al.(2004)J Biol Chem; 279(6): 4507-14.



P-Peptide - +

Immunohistochemical analysis of paraffin-embedded human breast carcinoma tissue, using CDC2 (phospho-Thr161) antibody (#11134).



Western blot analysis of extracts from COLO205 cells (Lane 1 and 2) and K562 cells (Lane 3), using CDC2 (phospho-Thr161) antibody (#11134).