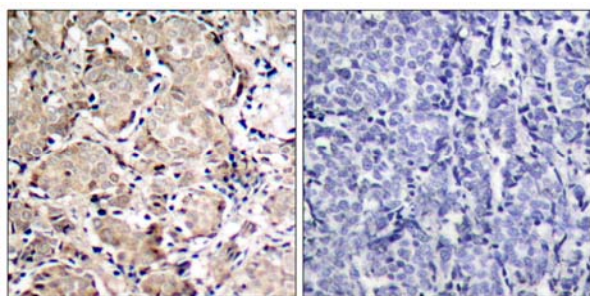
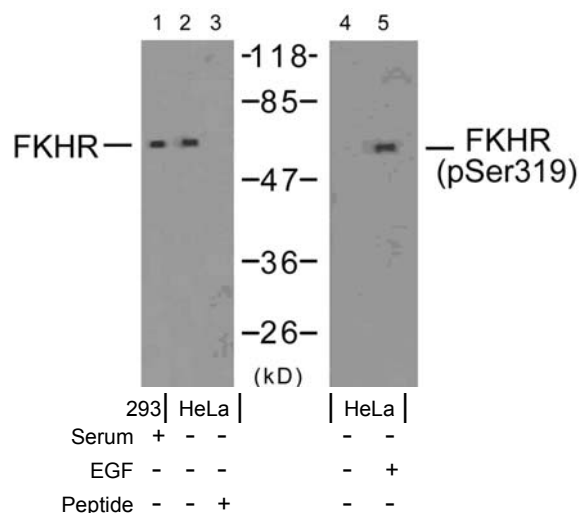


- Catalog Number:** 51136-1, 51136-2,
Amount: 50µg/50µl, 100µg/100µl,
Swiss-Prot No. : Q12778
All Names: FKHR, FOXO1, Forkhead box protein O1A, Forkhead in rhabdomyosarcoma
All Sites: Human: Ser319; Mouse: Ser316; Rat: Ser313
Form of Peptide : Peptide in phosphate buffered saline (without Mg²⁺ and Ca²⁺), pH 7.4, 150mM NaCl, 0.02% sodium azide and 50% glycerol.
Storage: Store at -20°C.
Quality Control: The quality of the peptide was evaluated by reversed-phase HPLC and mass spectrometry.
Peptide Information : The synthesized phosphopeptide was derived from human FKHR around the phosphorylation site of serine 319 (T-S-S^P-N-A).
Specificity: The peptide specifically blocks the signal of FKHR (phospho-Ser319) antibody (#11136) completely in Western blotting and IHC.
Applications: For Western blotting: add 10 µl of antibody and 10 µl of blocking peptide to 10 ml of antibody dilution buffer, and incubate at 4°C over night or at room temperature for 2 hours before allowing to react with the blot.
References: Rena G, et al. (2002) EMBO J 21(9): 2263-2271.
 Woods YL, et al. (2001) Biochem J 355(Pt 3): 597-607.
 Rena G, et al. (2001) Biochem J 354(Pt 3): 605-612.



P-Peptide - +

Immunohistochemical analysis of paraffin-embedded human breast carcinoma tissue using FKHR (phospho-Ser319) antibody (#11136).



Western blot analysis of extracts from 293 cells (10% serum-treated, 15min) and HeLa cells (EGF-treated, 200ng/ml, 15min), using FKHR (Ab-319) antibody (#21161, Lane 1, 2 and 3) and FKHR (phospho-Ser319) antibody (#11136, Lane 4 and 5).