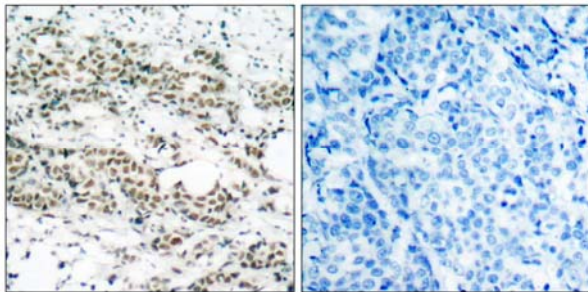




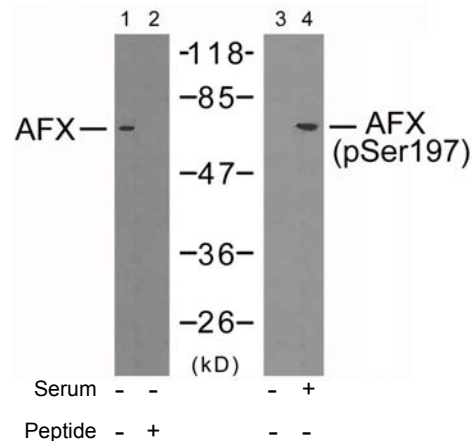
## AFX (Phospho-Ser197) Antibody Blocking Peptide

#51137

- Catalog Number:** 51137-1, 51137-2  
**Amount:** 50µg/50µl, 100µg/100µl  
**Form of Peptide :** Peptide in phosphate buffered saline (without Mg<sup>2+</sup> and Ca<sup>2+</sup>), pH 7.4, 150mM NaCl, 0.02% sodium azide and 50% glycerol.  
**Storage:** Store at -20°C.  
**Quality Control:** The quality of the peptide was evaluated by reversed-phase HPLC and mass spectrometry.  
**Peptide Information :** The synthesized phosphopeptide was derived from human AFX around the phosphorylation site of serine 197 (A-A-S<sup>P</sup>-M-D).  
**Specificity:** The peptide specifically blocks the signal of AFX (phospho-Ser197) antibody (#11137) completely in Western blotting and IHC.  
**Applications:** For Western blotting: add 10 µl of antibody and 10 µl of blocking peptide to 10 ml of antibody dilution buffer, and incubate at 4°C over night or at room temperature for 2 hours before allowing to react with the blot.  
**Swiss-Prot No. :** P98177  
**References:** Di Maira G, et al. (2005) Cell Death Differ; 12(6): 668-77.  
Essers MA, et al. EMBO J 2004 Nov. 11.  
Brownawell AM, (2001) Mol Cell Biol; 21(10): 3534-46.  
Kops GJ, et al. (1999) Nature; 398(6728): 630-4.



P-Peptide - +  
Immunohistochemical analysis of paraffin-embedded human breast carcinoma tissue using AFX (phospho-Ser197) antibody (#11137).



Western blot analysis of extracts from 293 cells using AFX (Ab-197) antibody (#21162, Lane 1 and 2) and AFX (phospho-Ser197) antibody (#11137, Lane 3 and 4).

**For Research Use Only**