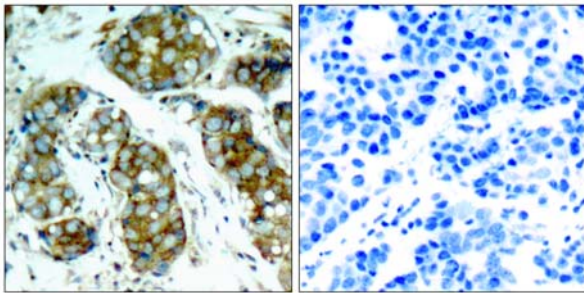
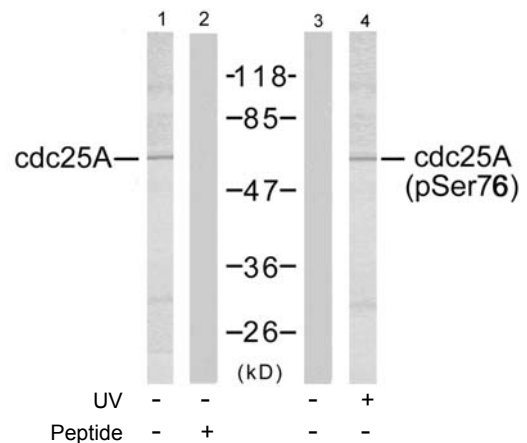


- Catalog Number:** 51138-1, 51138-2
- Amount:** 50µg/50µl, 100µg/100µl
- Form of Peptide :** Peptide in phosphate buffered saline (without Mg<sup>2+</sup> and Ca<sup>2+</sup>), pH 7.4, 150mM NaCl, 0.02% sodium azide and 50% glycerol.
- Storage:** Store at -20°C.
- Quality Control:** The quality of the peptide was evaluated by reversed-phase HPLC and mass spectrometry.
- Peptide Information :** The synthesized phosphopeptide was derived from human cdc25A around the phosphorylation site of serine 76 (M-G-S<sup>P</sup>-S-E).
- Specificity:** The peptide specifically blocks the signal of cdc25A (phospho-Ser76) antibody (#11138) completely in Western blotting and IHC.
- Applications:** For Western blotting: add 10 µl of antibody and 10 µl of blocking peptide to 10 ml of antibody dilution buffer, and incubate at 4°C over night or at room temperature for 2 hours before allowing to react with the blot.
- Swiss-Prot No. :** P30304
- References:** Jin J, et al. (2003) Genes 17(24): 3062-74.  
Shimuta K, et al. (2002) EMBO J 21(14): 3694-703.



P-Peptide                      -                      +

Immunohistochemical analysis of paraffin-embedded human breast carcinoma tissue, using cdc25A (phospho-Ser76) antibody (#11138).



Western blot analysis of extracts from A2780 cells using cdc25A (Ab-76) antibody (#21163, Lane 1 and 2) and cdc25A (phospho-Ser76) antibody (#11138, Lane 3 and 4)