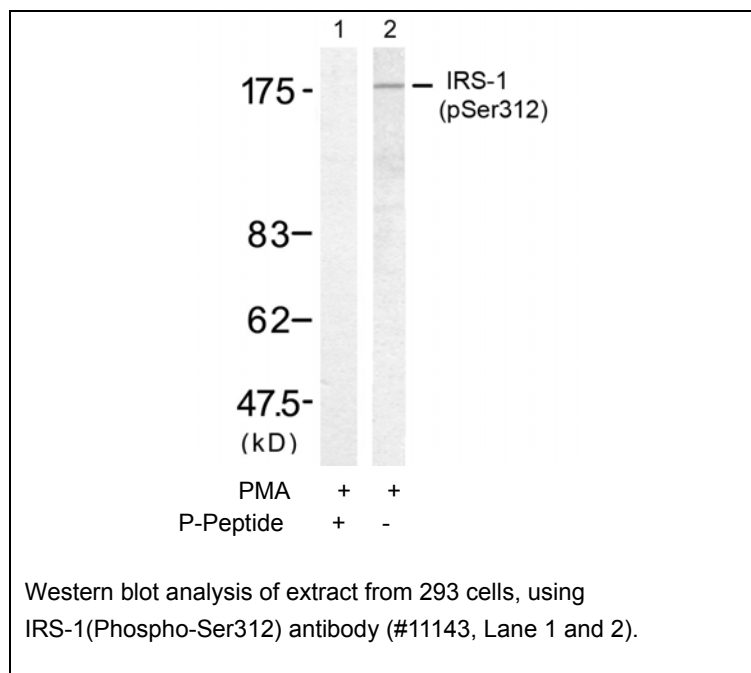




IRS-1(Phospho-Ser312) Antibody Blocking Peptide

#51143

- Catalog Number:** 51143-1, 51143-2
Amount: 50µg/50µl, 100µg/100µl
Swiss-Prot No. : P35568
Form of Peptide : Peptide in phosphate buffered saline (without Mg²⁺ and Ca²⁺), pH 7.4, 150mM NaCl, 0.02% sodium azide and 50% glycerol.
Storage: Store at -20°C.
Quality Control: The quality of the peptide was evaluated by reversed-phase HPLC and mass spectrometry.
Peptide Information : The synthesized phosphopeptide was derived from human IRS-1 around the phosphorylation site of serine 312 (A-T-S^P-P-A).
Specificity: The peptide specifically blocks the signal of IRS-1(Phospho-Ser312) antibody (#11143) completely in Western blotting.
Applications: For Western blotting: add 10 µl of antibody and 10 µl of blocking peptide to 10 ml of antibody dilution buffer, and incubate at 4°C over night or at room temperature for 2 hours before allowing to react with the blot.
References: Tzatsos A, et al. (2006) Mol Cell Biol; 26(1): 63-76
Ozes ON, et al. (2001) Proc Natl Acad Sci U S A; 98(8): 4640-4645
Szanto I, et al. (2000) Proc Natl Acad Sci U S A; 97(5): 2355-2360
Ozes ON, et al. (2001) Proc Natl Acad Sci U S A; 98(8): 4640-4645



For Research Use Only