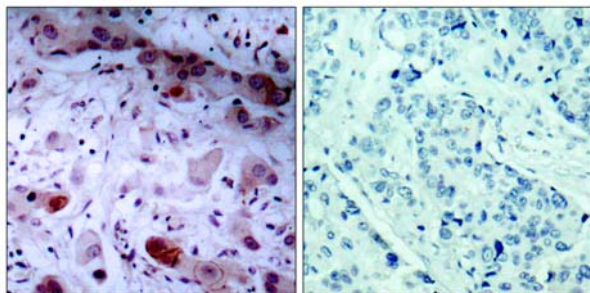
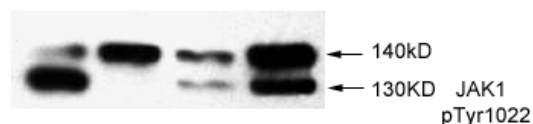


- Catalog Number:** 51149-1, 51149-2
- Amount:** 50µg/50µl, 100µg/100µl
- Form of Peptide :** Peptide in phosphate buffered saline (without Mg²⁺ and Ca²⁺), pH 7.4, 150mM NaCl, 0.02% sodium azide and 50% glycerol.
- Storage:** Store at -20°C.
- Quality Control:** The quality of the peptide was evaluated by reversed-phase HPLC and mass spectrometry.
- Peptide Information :** The synthesized phosphopeptide was derived from human JAK1 around the phosphorylation site of tyrosine 1022 (K-E-Y^P-Y-T).
- Specificity:** The peptide specifically blocks the signal of JAK1 (phospho-Tyr1022) antibody (#11149) completely in Western blotting and IHC .
- Applications:** For Western blotting: add 10 µl of antibody and 10 µl of blocking peptide to 10 ml of antibody dilution buffer, and incubate at 4°C over night or at room temperature for 2 hours before allowing to react with the blot.
- Swiss-Prot No. :** P23458
- References:** Zheng H, et al.(2005)Mol Cell Proteomics. 4(6):721-730.
Wang R, et al.(2003) Arch Biochem Biophys. 410(1): 7-15.



P-Peptide - +

Immunohistochemical analysis of paraffin-embedded human breast carcinoma tissue, using JAK1 (phospho-Tyr1022) antibody (#11149).



Western blot analysis of extract from thyroid cancer cell line Bph cells, using JAK1 (phospho-Tyr1022) antibody (#11149).