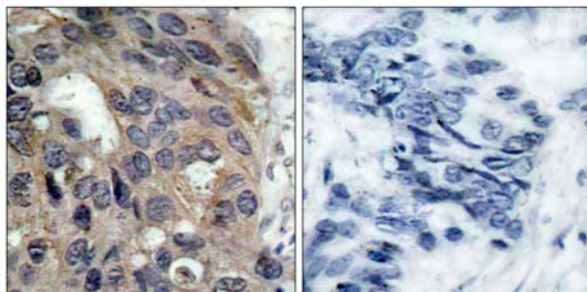
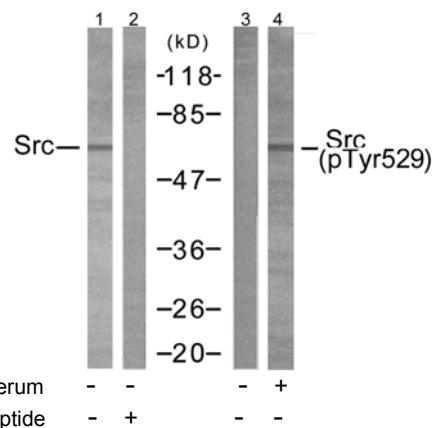


- Catalog Number:** 51153-1, 51153-2
- Amount:** 50µg/50µl, 100µg/100µl
- Form of Peptide :** Peptide in phosphate buffered saline (without Mg²⁺ and Ca²⁺), pH 7.4, 150mM NaCl, 0.02% sodium azide and 50% glycerol.
- Storage:** Store at -20°C.
- Quality Control:** The quality of the peptide was evaluated by reversed-phase HPLC and mass spectrometry.
- Peptide Information :** The synthesized phosphopeptide was derived from human Src around the phosphorylation site of tyrosine 529 (P-Q-Y^P-Q-P).
- Specificity:** The peptide specifically blocks the signal of Src (phospho-Tyr529) antibody (#11153) completely in Western blotting and IHC .
- Applications:** For Western blotting: add 10 µl of antibody and 10 µl of blocking peptide to 10 ml of antibody dilution buffer, and incubate at 4°C over night or at room temperature for 2 hours before allowing to react with the blot.
- Swiss-Prot No. :** P12931
- References:** Pyper J.M., (1985) Mol. Cell. Biol. 5:831-838
 Pyper J.M.(1990) Mol. Cell. Biol. 10:2035-2040
 Xu W., (1997).Nature 385:595-602
 Benes C.H., (2005) Cell 121:271-280



P-Peptide - +

Immunohistochemical analysis of paraffin-embedded human breast carcinoma tissue using Src (phospho-Tyr529) antibody (#11153).



Western blot analysis of extracts from 293 cells using Src (Ab-529) antibody (#21168, Lane1 and 2) and Src (phospho-Tyr529) antibody (#11153, Lane 3 and 4).