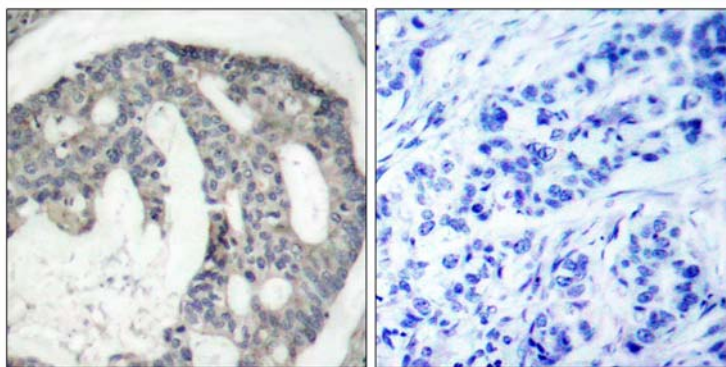




eNOS (Phospho-Ser1177) Antibody Blocking Peptide

#51156

- Catalog Number:** 51156
- Amount:** 100µg/100µl
- Form of Peptide:** Peptide in 10 mM phosphate buffered saline (without Mg²⁺ and Ca²⁺), pH 7.4, 150mM NaCl, 0.1 mM EDTA, 1 mg/ml BSA, 5% DMF and 5% glycerol.
- Peptide Information:** The synthesized phosphopeptide was derived from human eNOS around the phosphorylation site of serine 1177 (T-Q-S^P-F-S).
- Storage:** Store at -20°C.
- Quality Control:** The quality of the peptide was evaluated by reversed-phase HPLC and mass spectrometry.
- Specificity:** The peptide specifically blocks the signal of eNOS (phospho-Ser1177) antibody (#11156) completely in IHC
- Applications:** For Western blotting: add 10 µl of antibody and 10 µl of blocking peptide to 10 ml of antibody dilution buffer, and incubate at 4°C over night or at room temperature for 2 hours before allowing to react with the blot.
- References:** Fulton, D. et al. (1999) Nature 399, 597-601.
Harris, M.B. et al. (2001) J. Biol. Chem. 276, 16587-16591.
Thomas, S.R. et al. (2002) J. Biol. Chem. 277, 6017-6024..



P-Peptide

-

+

Immunohistochemical analysis of paraffin-embedded human breast carcinoma tissue using eNOS (phospho-Ser1177) antibody (#11156).

For Research Use Only