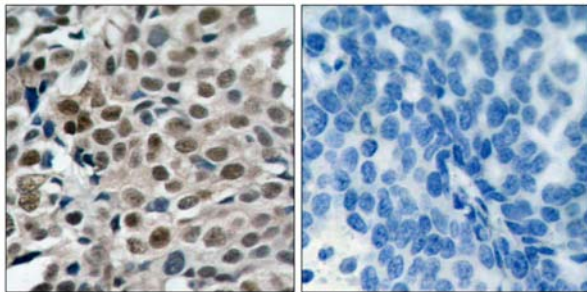
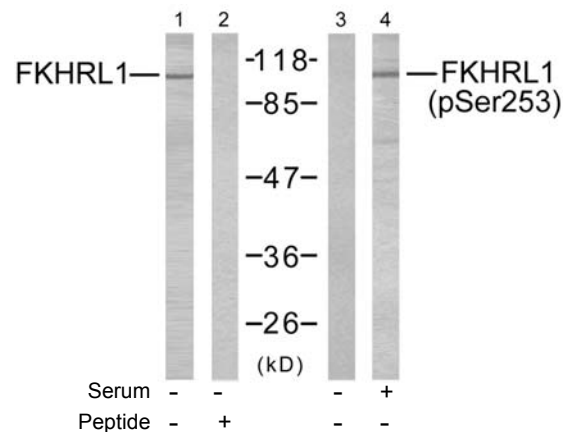


- Catalog Number:** 51157-1, 51157-2
Amount: 50µg/50µl, 100µg/100µl
Form of Peptide : Peptide in phosphate buffered saline (without Mg²⁺ and Ca²⁺), pH 7.4, 150mM NaCl, 0.02% sodium azide and 50% glycerol.
Storage: Store at -20°C.
Quality Control: The quality of the peptide was evaluated by reversed-phase HPLC and mass spectrometry.
Peptide Information : The synthesized phosphopeptide was derived from human FKHRL1 around the phosphorylation site of serine 253 (A-V-S^P-M-D).
Specificity: The peptide specifically blocks the signal of FKHRL1 (phospho-Ser253) antibody (#11157) completely in Western blotting and IHC .
Applications: For Western blotting:add 10 µl of antibody and 10 µl of blocking peptide to 10 ml of antibody dilution buffer, and incubate at 4°C over night or at room temperature for 2 hours before allowing to react with the blot.
Swiss-Prot No. : O43524
References: Smith WW, et al. (2005) J Cell Biol; 169(2): 331-9.
 Essafi A, et al. (2005) Oncogene; 24(14): 2317-29.
 Brunet A, et al. (2001)Mol Cell Biol; 21(3): 952-65.
 Brunet A, et al. (1999) Cell; 96(6): 857-68.



P-Peptide - +

Immunohistochemical analysis of paraffin-embedded human breast carcinoma tissue using FKHRL1 (phospho-Ser253) antibody (#11157).



Western blot analysis of extracts from NIH/3T3 cells using FKHRL1 (Ab-253) antibody (#21171, Lane 1 and 2) and FKHRL1 (phospho-Ser253) antibody (#11157, Lane 3 and 4).