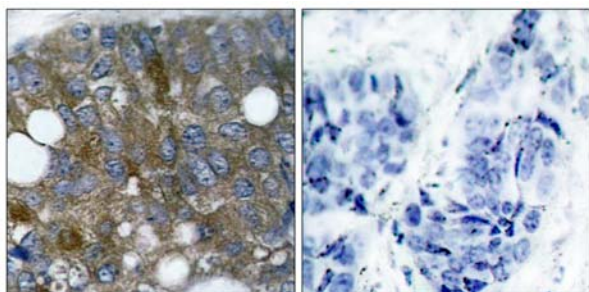


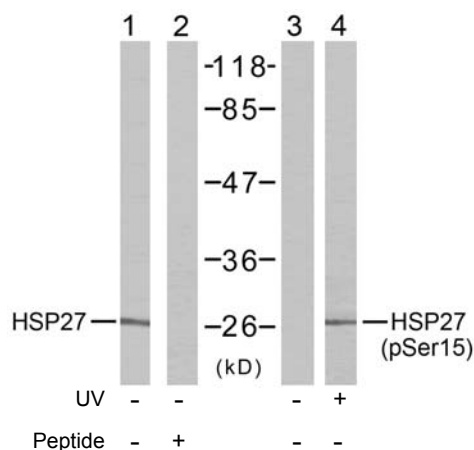
## HSP27 (Phospho-Ser15) Antibody Blocking Peptide

- Catalog Number:** 51164-1, 51164-2
- Amount:** 50µg/50µl, 100µg/100µl
- Form of Peptide :** Peptide in phosphate buffered saline (without Mg<sup>2+</sup> and Ca<sup>2+</sup>), pH 7.4, 150mM NaCl, 0.02% sodium azide and 50% glycerol.
- Storage:** Store at -20°C.
- Quality Control:** The quality of the peptide was evaluated by reversed-phase HPLC and mass spectrometry.
- Peptide Information :** The synthesized phosphopeptide was derived from human HSP27 around the phosphorylation site of serine15 (G-P-S<sup>P</sup>-W-D).
- Specificity:** The peptide specifically blocks the signal of HSP27 (phospho-Ser15) antibody (#11164) completely in Western blotting and IHC .
- Applications:** For Western blotting: add 10 µl of antibody and 10 µl of blocking peptide to 10 ml of antibody dilution buffer, and incubate at 4°C over night or at room temperature for 2 hours before allowing to react with the blot.
- Swiss-Prot No. :** P04792
- References:** Tremolada L, et al. (2005) *Proteomics*. 5(3): 788-795.  
 McGregor E, et al. (2004) *Mol Cell Proteomics*. 3(2): 115-124.  
 Benn SC, et al. (2002) *Neuron*. 36(1): 45-56.  
 MacDonald JA, et al. (2002) *Mol Cell Proteomics*. 1(4): 314-322.



P-Peptide - +

Immunohistochemical analysis of paraffin- embedded human breast carcinoma tissue using HSP27 (phospho-Ser15) antibody (#11164).



Western blot analysis of extract from HeLa cells using HSP27 (Ab-15) antibody (#21144, Lane1 and 2) and HSP27 (phospho-Ser15) antibody (#11164, Lane 3 and 4).