



## AMPK1/AMPK2 (Phospho-Ser485/Ser491) Antibody Blocking Peptide

#51174

**Catalog Number:** 51174-1, 51174-2

**Amount:** 50µg/50µl, 100µg/100µl

**Form of Peptide:** Peptide in 10 mM phosphate buffered saline (without Mg<sup>2+</sup> and Ca<sup>2+</sup>), pH 7.4, 150mM NaCl, 0.1 mM EDTA, 1 mg/ml BSA, 5% DMF and 5% glycerol.

**Peptide Information:** The synthesized phosphopeptide was derived from human AMPK1/AMPK2 around the phosphorylation site of serine 485/491 (S-G- S<sup>P</sup>-V-S).

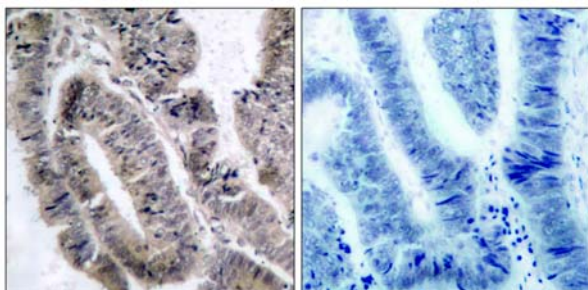
**Storage:** Store at -20°C.

**Quality Control:** The quality of the peptide was evaluated by reversed-phase HPLC and mass spectrometry.

**Specificity:** The peptide specifically blocks the signal of AMPK1/AMPK2 (Phospho-Ser485/Ser491) antibody (#11174) completely in Western blotting and IHC.

**Applications:** For Western blotting: add 10 µl of antibody and 10 µl of blocking peptide to 10 ml of antibody dilution buffer, and incubate at 4°C over night or at room temperature for 2 hours before allowing to react with the blot.

**References:** Kim JE, et al. (2005) J Proteome Res. 4(4): 1339-1346.  
Woods A, et al. (2003) J Biol Chem. 278(31): 28434-28442.

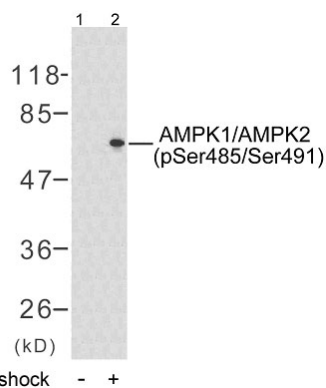


P-Peptide

-

+

Immunohistochemical analysis of paraffin- embedded human colon carcinoma tissue, using AMPK1/AMPK2 (phospho-Ser485/Ser491) antibody(#11174).



Western blot analysis of extract from HeLa cells untreated or treated with heat shock (30min), using AMPK1/AMPK2 (phospho-Ser485/Ser491) antibody (#11174).

**For Research Use Only**