



HDAC5 (Phospho-Ser498) Antibody Blocking Peptide

#51193

Catalog Number: 51193-1, 51193-2

Amount: 50µg/50µl, 100µg/100µl

Form of Peptide: Peptide in 10 mM phosphate buffered saline (without Mg²⁺ and Ca²⁺), pH 7.4, 150mM NaCl, 0.1 mM EDTA, 1 mg/ml BSA, 5% DMF and 5% glycerol.

Peptide Information: The synthesized phosphopeptide was derived from human HDAC5 around the phosphorylation site of serine 498 (T-Q-S^P-S-P)

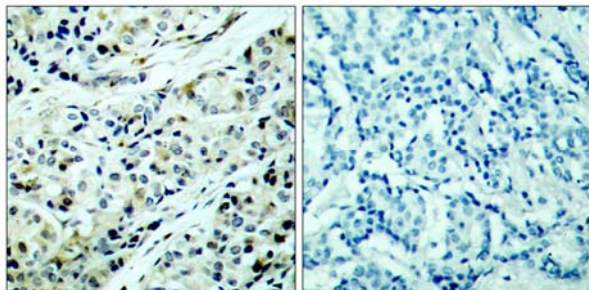
Storage: Store at -20°C.

Quality Control: The quality of the peptide was evaluated by reversed-phase HPLC and mass spectrometry.

Specificity: The peptide specifically blocks the signal of HDAC5 (Phospho-Ser498) Antibody (#11193) completely in Western blotting and IHC.

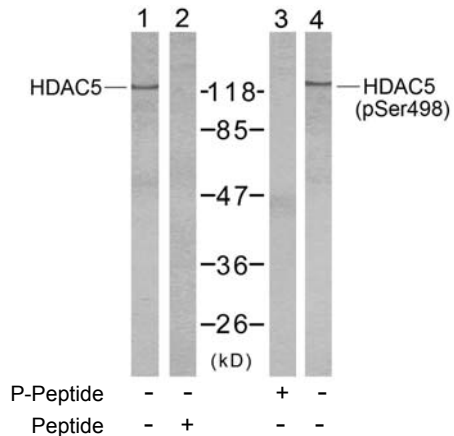
Applications: For Western blotting: add 10 µl of antibody and 10 µl of blocking peptide to 10 ml of antibody dilution buffer, and incubate at 4°C over night or at room temperature for 2 hours before allowing to react with the blot.

References: Doppler H, et al. (2005) J Biol Chem. 280(15):15013-15019.
McKinsey TA, et al. (2000) Nature. 408(6808): 106-111.



P-Peptide - +

Immunohistochemical analysis of paraffin-embedded human breast carcinoma tissue, using HDAC5 (phospho-Ser498) antibody (#11193).



Western blot analysis of extract from NIH/3T3 cells using HDAC5 (Ab-498) antibody (#21142, Lane 1 and 2) and HDAC5 (phospho-Ser498) antibody (#11193, Lane 3 and 4).

For Research Use Only