



p62Dok (Phospho-Tyr398) Antibody Blocking Peptide

#51277

Catalog Number: 51277-1, 51277-2

Amount: 50µg/50µl, 100µg/100µl

Form of Peptide: Peptide in 10 mM phosphate buffered saline (without Mg^{2+} and Ca^{2+}), pH 7.4, 150mM NaCl, 0.1 mM EDTA, 1 mg/ml BSA, 5% DMF and 5% glycerol.

Peptide Information: The synthesized phosphopeptide was derived from human p62Dok around the phosphorylation site of 398 (E-G-Y^P-E-L)

Storage: Store at -20°C.

Quality Control: The quality of the peptide was evaluated by reversed-phase HPLC and mass spectrometry.

Specificity: The peptide specifically blocks the signal p62Dok (phospho-Tyr398) antibody (#11277) completely in Western blotting and IHC.

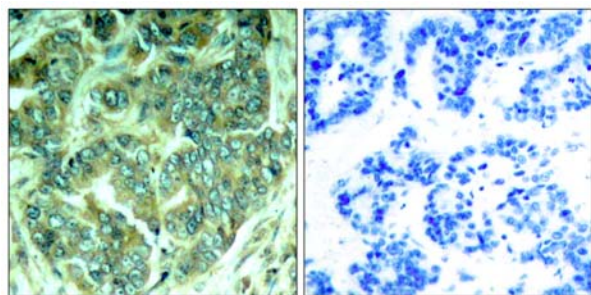
Applications: For Western blotting: add 10 µl of antibody and 10 µl of blocking peptide to 10 ml of antibody dilution buffer, and incubate at 4°C over night or at room temperature for 2 hours before allowing to react with the blot.

References: Michael J. Wick, et al. (2001) J. Biol. Chem ; 276: 42843 - 42850.

Paul D. Simoncic, et al. (2006) Mol. Cell. Biol ; 26: 4149 - 4160.

Nadia Dubé, et al. (2004) PNAS ; 101: 1834.

Adam C. Yopp, et al. (2005) J. Immunol ; 175: 2913 - 2924.

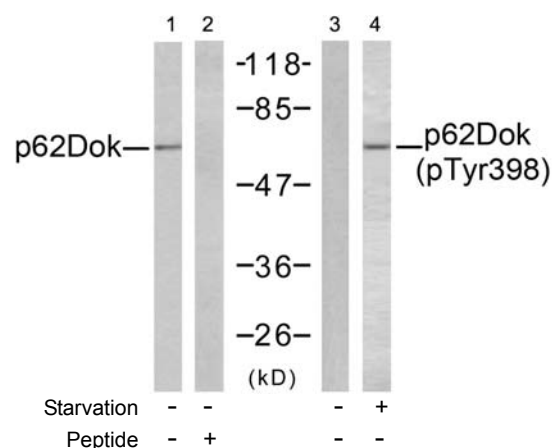


P-Peptide

-

+

Immunohistochemical analysis of paraffin-embedded human breast carcinoma tissue, using p62Dok (phospho-Tyr398) antibody (#11277).



Western blot analysis of extracts from K562 cells, using p62Dok (Ab-398) antibody (#21269, Lane 1 and 2) and p62Dok (phospho-Tyr398) antibody (#11277, Lane 3 and 4).

For Research Use Only