



# Isocitrate Dehydrogenase Microplate Assay Kit

**Catalog # AS0136**

Detection and Quantification of Isocitrate Dehydrogenase Activity in Serum, Plasma, Tissue extracts, Cell lysate, Cell culture, Other biological fluids Samples.

This instruction must be read in its entirety before using this product.

For research use only, Not for use in diagnostic procedures.

Contact information:

Tel:+1 (301) 446-2499 Fax:+1 (301) 446-2413

Email:techcn@signalwayantibody.com Web:www.sabbiotech.com

I. INTRODUCTION.....	2
II. KIT COMPONENTS.....	3
III. MATERIALS REQUIRED BUT NOT PROVIDED.....	3
VI. SAMPLE PREPARATION.....	4
V. ASSAY PROCEDURE.....	5
VI. CALCULATION.....	6
VII. TYPICAL DATA.....	7
VIII. TECHNICAL SUPPORT.....	7
IX. NOTES.....	7

## I. INTRODUCTION

Isocitrate Dehydrogenase (IDH)(EC 1.1.1.42) and (EC 1.1.1.41) is an enzyme which catalyzes the interconversion of isocitrate and  $\alpha$ -ketoglutarate. There are three IDH isoforms: IDH3 uses the cofactor NAD<sup>+</sup> and catalyzes the third step in the citric acid cycle, while IDH1 and IDH2 use the cofactor NADP<sup>+</sup> and catalyze the same reaction outside the citric acid cycle. This kit measuresthe activity of the NADP<sup>+</sup> isoforms. Mutations in IDH1 and IDH2 have been linked with various brain tumors and acute myeloid leukemia.

Isocitrate Dehydrogenase Microplate Assay Kit is a sensitive assay for determining Isocitrate Dehydrogenase activity in various samples. Isocitrate Dehydrogenase activity is determined by the product of  $\alpha$ -ketoglutarate. The increase in absorbance at 410 nm is directly proportional to the enzyme activity.

## II. KIT COMPONENTS

Component	Volume	Storage
96-Well Microplate	1 plate	
Assay Buffer I	30 ml x 4	4 °C
Assay Buffer II	1.2 ml x 1	4 °C
Assay Buffer III	20 ml x 1	4 °C
Substrate	Powder x 1	-20 °C
Substrate Diluent	4 ml x 1	4 °C
Dye Reagent I	5 ml x 1	4 °C, keep in dark
Dye Reagent II	15 ml x 1	4 °C
Standard	Powder x 1	4 °C
Technical Manual	1 Manual	

### Note:

**Substrate:** add 4 ml Substrate Diluent to dissolve before use.

**Standard:** add 1 ml distilled water to dissolve before use. The concentration will be 20 mmol/L.

## III. MATERIALS REQUIRED BUT NOT PROVIDED

1. Microplate reader to read absorbance at 410 nm
2. Distilled water
3. Pipettor
4. Pipette tips
5. Mortar
6. Centrifuge
7. Timer
8. Ice

#### IV. SAMPLE PREPARATION

##### 1. For cell and bacteria samples

Collect cell or bacteria into centrifuge tube, discard the supernatant after centrifugation, add 0.99ml Assay Buffer I and 10  $\mu$ l Assay Buffer II on ice, centrifuged at 600g 4°C for 5 minutes. Take the supernatant into a new centrifuge tube, 11000g 4°C for 10 minutes, discard the supernatant. Add 198 $\mu$ l Assay Buffer III and 2  $\mu$ l Assay Buffer II to the precipitation, shock, sonicate (with power 20%, sonication 3s, interval 10s, repeat 30 times). Centrifuged at 11000g 4°C for 10 minutes, take the supernatant into a new centrifuge tube and keep it on ice for detection.

##### 2. For tissue samples

Weigh out 0.1 g tissue, homogenize with 0.99ml Assay Buffer I and 10  $\mu$ l Assay Buffer II on ice, centrifuged at 600g 4°C for 5 minutes. Take the supernatant into a new centrifuge tube, 11000g 4°C for 10 minutes, discard the supernatant. Add 198 $\mu$ l Assay Buffer III and 2  $\mu$ l Assay Buffer II to the precipitation, shock, sonicate (with power 20%, sonication 3s, interval 10s, repeat 30 times). Centrifuged at 11000g 4°C for 10 minutes, take the supernatant into a new centrifuge tube and keep it on ice for detection.

##### 3.3. For serum or plasma samples

Detect directly.

## V. ASSAY PROCEDURE

Warm all thereagents to 37°C before use.

Add following reagents intothe microplate:

Reagent	Sample	Control	Standard	Blank
Sample	10 µl	--	--	--
Standard	--	--	10 µl	--
Distilled water	--	10 µl	40 µl	50 µl
Substrate	40 µl	40 µl	--	--
Mix, incubate at 37°C for 30 minutes.				
Dye Reagent I	50 µl	50 µl	50 µl	50 µl
Dye Reagent II	150 µl	150 µl	150 µl	150 µl
Mix, stand at room temperature for 10 minutes, record absorbance measured at 410 nm.				

## VI. CALCULATION

**Unit Definition:** One Unit of IDH activity is defined as the enzyme produces 1  $\mu\text{mol}$   $\alpha$ -ketoglutarate per min at 37°C.

1. According to the volume of serum or plasma

$$\begin{aligned} \text{IDH (U/ml)} &= (C_{\text{Standard}} \times V_{\text{Standard}}) \times (\text{OD}_{\text{Sample}} - \text{OD}_{\text{Control}}) / (\text{OD}_{\text{Standard}} - \text{OD}_{\text{Blank}}) / V_{\text{Sample}} / T \\ &= 0.67 \times (\text{OD}_{\text{Sample}} - \text{OD}_{\text{Control}}) / (\text{OD}_{\text{Standard}} - \text{OD}_{\text{Blank}}) \end{aligned}$$

2. According to the weight of sample

$$\begin{aligned} \text{IDH (U/g)} &= (C_{\text{Standard}} \times V_{\text{Standard}}) \times (\text{OD}_{\text{Sample}} - \text{OD}_{\text{Control}}) / (\text{OD}_{\text{Standard}} - \text{OD}_{\text{Blank}}) / (W \times V_{\text{Sample}} / \\ &\quad V_{\text{Assay}}) / T \\ &= 0.134 \times (\text{OD}_{\text{Sample}} - \text{OD}_{\text{Control}}) / (\text{OD}_{\text{Standard}} - \text{OD}_{\text{Blank}}) / W \end{aligned}$$

3. According to the quantity of cell or bacteria

$$\begin{aligned} \text{IDH (U/10}^4\text{)} &= (C_{\text{Standard}} \times V_{\text{Standard}}) \times (\text{OD}_{\text{Sample}} - \text{OD}_{\text{Control}}) / (\text{OD}_{\text{Standard}} - \text{OD}_{\text{Blank}}) / (N \times V_{\text{Sample}} / \\ &\quad V_{\text{Assay}}) / T \\ &= 0.134 \times (\text{OD}_{\text{Sample}} - \text{OD}_{\text{Control}}) / (\text{OD}_{\text{Standard}} - \text{OD}_{\text{Blank}}) / N \end{aligned}$$

$C_{\text{Standard}}$ : the concentration of Standard, 20 mmol/L = 20  $\mu\text{mol/ml}$ ;

W: the weight of sample, g;

N: the quantity of cell or bacteria,  $N \times 10^4$ ;

$V_{\text{Standard}}$ : the volume of standard, 0.01 ml;

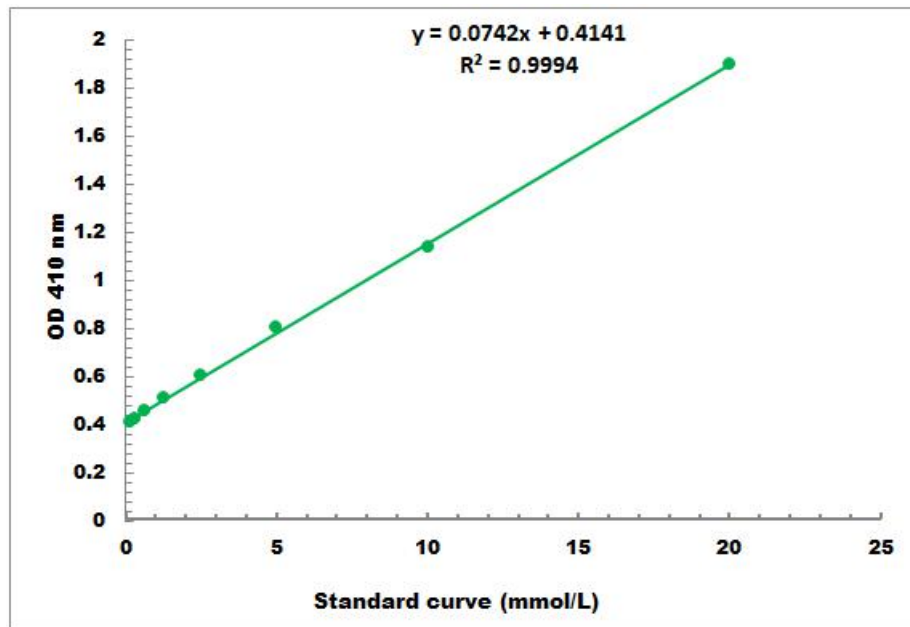
$V_{\text{Sample}}$ : the volume of sample, 0.01 ml;

$V_{\text{Assay}}$ : the volume of Assay buffer, 0.2 ml;

T: the reaction time, 30 min.

## VII. TYPICAL DATA

The standard curve is for demonstration only. A standard curve must be run with each assay.



Detection Range: 0.2 mmol/L - 20 mmol/L

## VIII. TECHNICAL SUPPORT

For troubleshooting, information or assistance, please go online to [www.sabbiotech.cn](http://www.sabbiotech.cn) or contact us at [techcn@signalwayantibody.com](mailto:techcn@signalwayantibody.com)

## IX. NOTES