

EGR4 Antibody

Catalog No: #36837



Package Size: #36837-1 50ul #36837-2 100ul

Orders: order@signalwayantibody.comSupport: tech@signalwayantibody.com

Description

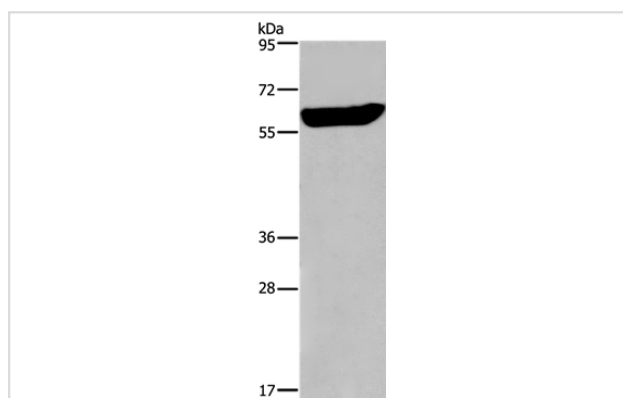
Product Name	EGR4 Antibody
Host Species	Rabbit
Clonality	Polyclonal
Purification	Antigen affinity purification.
Applications	WB IHC
Species Reactivity	Hu Ms
Specificity	The antibody detects endogenous levels of total EGR4 protein.
Immunogen Type	Peptide
Immunogen Description	Synthetic peptide corresponding to a region derived from internal residues of human early growth response 4
Target Name	EGR4
Other Names	NGFIC; NGFI-C; PAT133
Accession No.	Swiss-Prot#: Q05215NCBI Gene ID: 1961Gene Accssion: NP_001956
SDS-PAGE MW	51kd
Concentration	0.4mg/ml
Formulation	Rabbit IgG in pH7.3 PBS, 0.05% NaN ₃ , 50% Glycerol.
Storage	Store at -20°C

Application Details

Western blotting: 1:500-1:2000

Immunohistochemistry: 1:25-1:100

Images



Gel: 8%SDS-PAGE

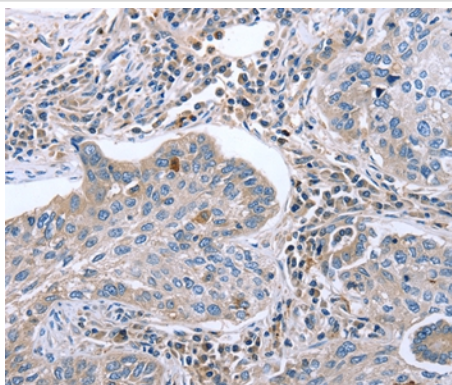
Lysates (from left to right): Human fetal brain tissue

Amount of lysate: 40ug per lane

Primary antibody: 1/400 dilution

Secondary antibody dilution: 1/8000

Exposure time: 35 seconds



Immunohistochemical analysis of paraffin-embedded Human lung cancer tissue using #36837 at dilution 1/25.

Background

Early growth response protein 4 (EGR-4), also known as AT133, is a protein that in humans is encoded by the EGR4 gene. EGR-4 is a member of the early growth response (EGF) family of zinc finger transcription factors. Transcriptional regulator. Recognizes and binds to the DNA sequence 5'-GCGGGGGCG-3' (GSG). Activates the transcription of target genes whose products are required for mitogenesis and differentiation.

Note: This product is for in vitro research use only and is not intended for use in humans or animals.