

ING1 Antibody

Catalog No: #36932

Package Size: #36932-1 50ul #36932-2 100ul

Orders: order@signalwayantibody.comSupport: tech@signalwayantibody.com

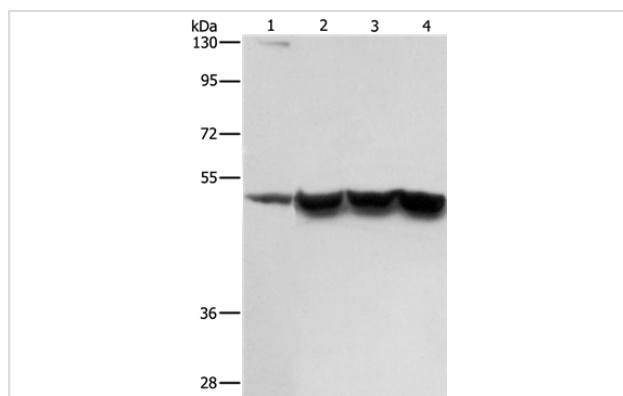
Description

Product Name	ING1 Antibody
Host Species	Rabbit
Clonality	Polyclonal
Purification	Antigen affinity purification.
Applications	WB
Species Reactivity	Hu Ms
Specificity	The antibody detects endogenous levels of total ING1 protein.
Immunogen Type	Peptide
Immunogen Description	Synthetic peptide corresponding to residues near the N terminal of human inhibitor of growth family, member 1
Target Name	ING1
Other Names	p33; p47; p33ING1; p24ING1c; p33ING1b; p47ING1a
Accession No.	Swiss-Prot#: Q9UK53NCBI Gene ID: 3621Gene Accssion: NP_005528
SDS-PAGE MW	47kd
Concentration	1.6mg/ml
Formulation	Rabbit IgG in pH7.3 PBS, 0.05% NaN ₃ , 50% Glycerol.
Storage	Store at -20°C

Application Details

Western blotting: 1:500-1:2000

Images



Gel: 8%SDS-PAGE

Lysates (from left to right): Hela cell and mouse brain tissue,

Jurkat and Raw264.7 cell

Amount of lysate: 40ug per lane

Primary antibody: 1/267 dilution

Secondary antibody dilution: 1/8000

Exposure time: 1 second

Background

This gene encodes a tumor suppressor protein that can induce cell growth arrest and apoptosis. The encoded protein is a nuclear protein that physically interacts with the tumor suppressor protein TP53 and is a component of the p53 signaling pathway. Reduced expression and rearrangement of this gene have been detected in various cancers. Multiple alternatively spliced transcript variants encoding distinct isoforms have been reported.

Published Papers

et al., Cytoplasmic expression of p33ING1b is correlated with tumorigenesis and progression of head and neck squamous cell carcinoma. In Histol Histopathol on 2011 May by Xiao-Han Li, Akira Noguchi, et al..PMID: 21432775, , (2011)

[PMID:21432775](#)

Note: This product is for in vitro research use only and is not intended for use in humans or animals.