

ITGA2 Antibody

Catalog No: #37117

Package Size: #37117-1 50ul #37117-2 100ul

Orders: order@signalwayantibody.comSupport: tech@signalwayantibody.com

Description

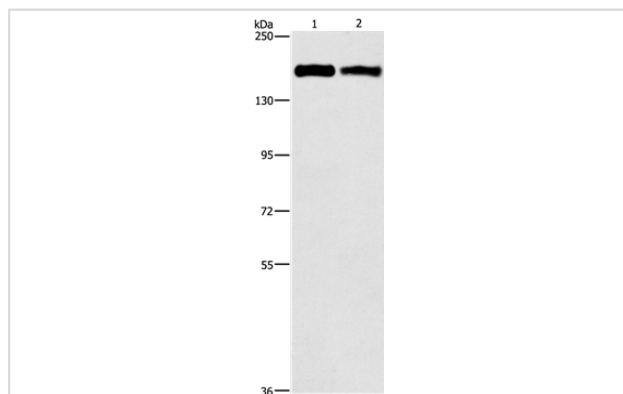
Product Name	ITGA2 Antibody
Host Species	Rabbit
Clonality	Polyclonal
Purification	Antigen affinity purification.
Applications	WB IHC
Species Reactivity	Hu
Specificity	The antibody detects endogenous levels of total ITGA2 protein.
Immunogen Type	Peptide
Immunogen Description	Synthetic peptide corresponding to residues near the C terminal of human integrin, alpha 2 (CD49B, alpha 2 subunit of VLA-2 receptor)
Target Name	ITGA2
Other Names	BR; GPIa; CD49B; HPA-5; VLA-2; VLAA2
Accession No.	Swiss-Prot#: P17301NCBI Gene ID: 3673Gene Accssion: NP_002194
SDS-PAGE MW	129kd
Concentration	1.2mg/ml
Formulation	Rabbit IgG in pH7.3 PBS, 0.05% NaN ₃ , 50% Glycerol.
Storage	Store at -20°C

Application Details

Western blotting: 1:500-1:2000

Immunohistochemistry: 1:25-1:100

Images



Gel: 6%SDS-PAGE

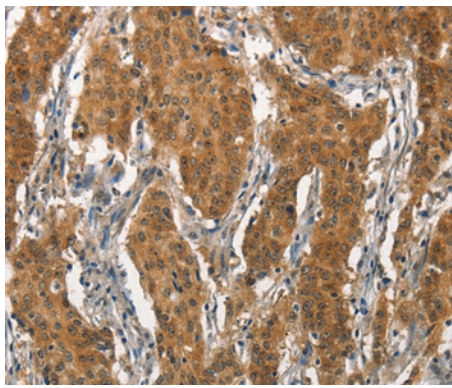
Lysates (from left to right): Human lung cancer tissue and A431 cell

Amount of lysate: 40ug per lane

Primary antibody: 1/300 dilution

Secondary antibody dilution: 1/8000

Exposure time: 40 seconds



Immunohistochemical analysis of paraffin-embedded Human gastric cancer tissue using #37117 at dilution 1/15.

Background

This gene encodes the alpha subunit of a transmembrane receptor for collagens and related proteins. The encoded protein forms a heterodimer with a beta subunit and mediates the adhesion of platelets and other cell types to the extracellular matrix. Loss of the encoded protein is associated with bleeding disorder platelet-type 9. Antibodies against this protein are found in several immune disorders, including neonatal alloimmune thrombocytopenia. This gene is located adjacent to a related alpha subunit gene. Alternative splicing results in multiple transcript variants.

Published Papers

el at., Inhibition of neurogenic and thromboxane A₂-induced human prostate smooth muscle contraction by the integrin $\alpha 2\beta 1$ inhibitor BTT-3033 and the integrin-linked kinase inhibitor Cpd22. In Prostate on 2020 Aug by Bingsheng Li, Xiaolong Wang, et al..PMID:32449814, , (2020)

[PMID:32449814](#)

Note: This product is for in vitro research use only and is not intended for use in humans or animals.