

LIN28B Antibody

Catalog No: #37362

Package Size: #37362-1 50ul #37362-2 100ul

Orders: order@signalwayantibody.comSupport: tech@signalwayantibody.com

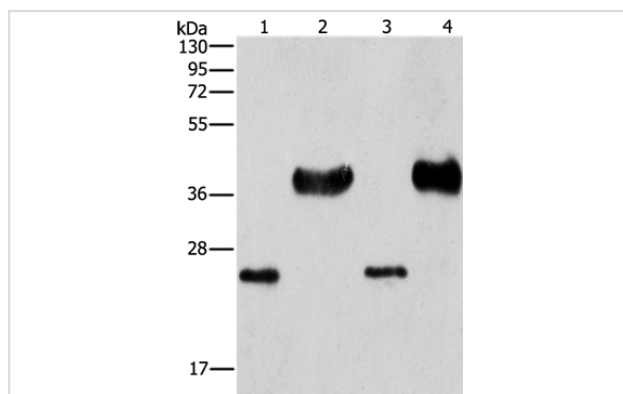
Description

Product Name	LIN28B Antibody
Host Species	Rabbit
Clonality	Polyclonal
Purification	Antigen affinity purification.
Applications	WB
Species Reactivity	Hu Ms
Specificity	The antibody detects endogenous levels of total LIN28B protein.
Immunogen Type	Peptide
Immunogen Description	Synthetic peptide corresponding to residues near the C terminal of human lin-28 homolog B (C. elegans)
Target Name	LIN28B
Other Names	CSDD2
Accession No.	Swiss-Prot#: Q6ZN17NCBI Gene ID: 389421Gene Accssion: NP_001004317
SDS-PAGE MW	27kd
Concentration	1.6mg/ml
Formulation	Rabbit IgG in pH7.3 PBS, 0.05% NaN ₃ , 50% Glycerol.
Storage	Store at -20°C

Application Details

Western blotting: 1:500-1:2000

Images



Gel: 10%SDS-PAGE

Lysates (from left to right): Mouse liver tissue and k562 cell, hela and 293T cell

Amount of lysate: 40ug per lane

Primary antibody: 1/550 dilution

Secondary antibody dilution: 1/8000

Exposure time: 1 minute

Background

The protein encoded by this gene belongs to the lin-28 family, which is characterized by the presence of a cold-shock domain and a pair of CCHC zinc finger domains. This gene is highly expressed in testis, fetal liver, placenta, and in primary human tumors and cancer cell lines. It is negatively regulated by microRNAs that target sites in the 3' UTR, and overexpression of this gene in primary tumors is linked to the repression of let-7 family of

microRNAs and derepression of let-7 targets, which facilitates cellular transformation. [provided by RefSeq, Jun 2012]

Published Papers

et al., SALL4, a novel marker for human gastric carcinogenesis and metastasis. In Oncogene on 2014 Nov 27 by L Zhang , Z Xu et al..PMID:24276240, , (2014)

[PMID:24276240](#)

Note: This product is for in vitro research use only and is not intended for use in humans or animals.