

SCMH1 antibody

Catalog No: #22239

Orders: order@signalwayantibody.comSupport: tech@signalwayantibody.com

Description

Product Name	SCMH1 antibody
Host Species	Rabbit
Clonality	Polyclonal
Purification	Purified by antigen-affinity chromatography.
Applications	WB IHC IF
Species Reactivity	Hu
Immunogen Type	Recombinant protein
Immunogen Description	Recombinant protein fragment contain a sequence corresponding to a region within amino acids 1 and 208 of SCMH1
Target Name	SCMH1
Accession No.	NCBI Gene ID: 22955NCBI mRNA#: NM_012236NCBI Protein#: NP_036368
Concentration	1mg/ml
Formulation	Supplied in 0.1M Tris-buffered saline with 10% Glycerol (pH7.0). 0.01% Thimerosal was added as a preservative.
Storage	Store at -20°C for long term preservation (recommended). Store at 4°C for short term use.

Application Details

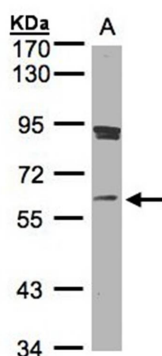
Predicted MW: 65kd

Western blotting: 1:500-1:3000

Immunohistochemistry: 1:100-1:250

Immunofluorescence: 1:100-1:200

Images

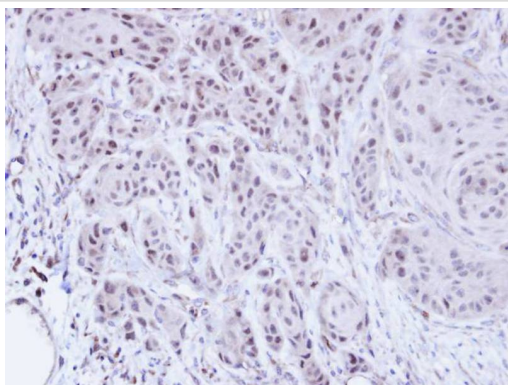


Sample(30 ug whole cell lysate)

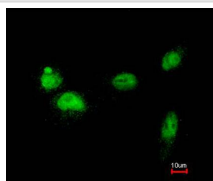
A: Raji

7.5% SDS PAGE

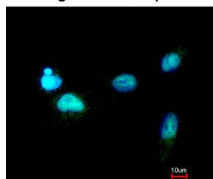
Primary antibody diluted at 1: 1000



Immunohistochemical analysis of paraffin-embedded Cal27 xenograft, using SCM1H1 antibody at 1: 100 dilution.



Merged with DNA probe



Immunofluorescence analysis of paraformaldehyde-fixed A549, using SCM1H1 antibody at 1: 200 dilution.

Note: This product is for in vitro research use only and is not intended for use in humans or animals.