

KCNG2 Antibody

Catalog No: #37675



Package Size: #37675-1 50ul #37675-2 100ul

Orders: order@signalwayantibody.comSupport: tech@signalwayantibody.com

Description

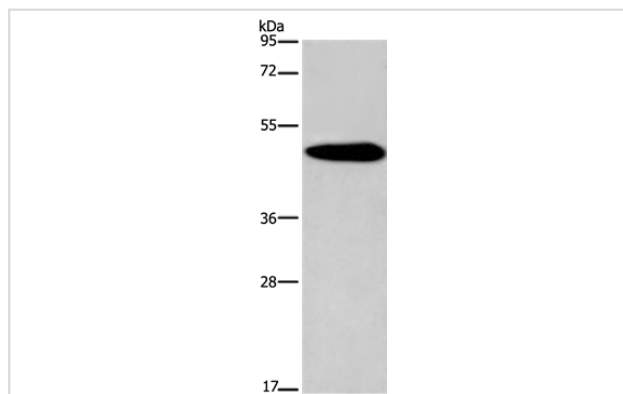
Product Name	KCNG2 Antibody
Host Species	Rabbit
Clonality	Polyclonal
Purification	Antigen affinity purification.
Applications	WB IHC
Species Reactivity	Hu Ms
Specificity	The antibody detects endogenous levels of total KCNG2 protein.
Immunogen Type	Peptide
Immunogen Description	Synthetic peptide corresponding to a region derived from internal residues of human potassium voltage-gated channel, subfamily G, member 2
Target Name	KCNG2
Other Names	KCNF2; KV6.2
Accession No.	Swiss-Prot#: Q9UJ96NCBI Gene ID: 26251Gene Accssion: NP_036415
SDS-PAGE MW	51kd
Concentration	2.6mg/ml
Formulation	Rabbit IgG in pH7.3 PBS, 0.05% NaN ₃ , 50% Glycerol.
Storage	Store at -20°C

Application Details

Western blotting: 1:500-1:2000

Immunohistochemistry: 1:50-1:200

Images



Gel: 8%SDS-PAGE

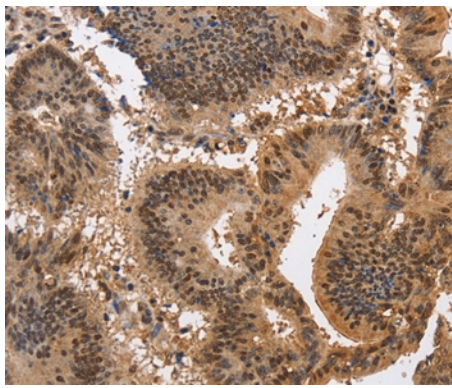
Lysates (from left to right): Mouse brain tissue

Amount of lysate: 40ug per lane

Primary antibody: 1/650 dilution

Secondary antibody dilution: 1/8000

Exposure time: 3 minutes



Immunohistochemical analysis of paraffin-embedded Human colon cancer tissue using #37675 at dilution 1/40.

Background

Voltage-gated potassium (Kv) channels represent the most complex class of voltage-gated ion channels from both functional and structural standpoints. Their diverse functions include regulating neurotransmitter release, heart rate, insulin secretion, neuronal excitability, epithelial electrolyte transport, smooth muscle contraction, and cell volume. This gene encodes a member of the potassium channel, voltage-gated, subfamily G. This member is a gamma subunit of the voltage-gated potassium channel. The delayed-rectifier type channels containing this subunit may contribute to cardiac action potential repolarization.?

Note: This product is for in vitro research use only and is not intended for use in humans or animals.