

KCNG3 Antibody

Catalog No: #37676



Package Size: #37676-1 50ul #37676-2 100ul

Orders: order@signalwayantibody.comSupport: tech@signalwayantibody.com

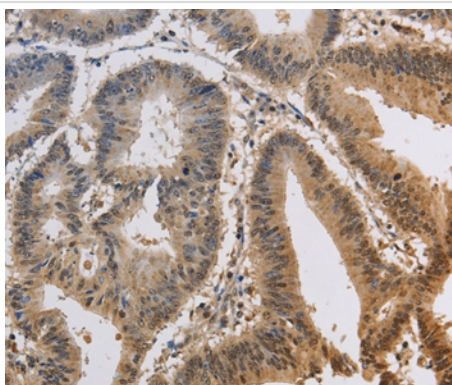
Description

Product Name	KCNG3 Antibody
Host Species	Rabbit
Clonality	Polyclonal
Purification	Antigen affinity purification.
Applications	IHC
Species Reactivity	Hu Ms Rt
Specificity	The antibody detects endogenous levels of total KCNG3 protein.
Immunogen Type	Peptide
Immunogen Description	Synthetic peptide corresponding to a region derived from internal residues of human potassium voltage-gated channel, subfamily G, member 3
Target Name	KCNG3
Other Names	KV6.3; KV10.1
Accession No.	Swiss-Prot#: Q8TAE7NCBI Gene ID: 170850Gene Accssion: NP_579875
Concentration	2.2mg/ml
Formulation	Rabbit IgG in pH7.3 PBS, 0.05% NaN ₃ , 50% Glycerol.
Storage	Store at -20°C

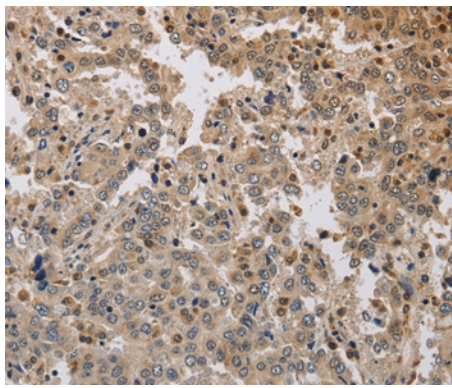
Application Details

Immunohistochemistry: 1:50-1:200

Images



Immunohistochemical analysis of paraffin-embedded Human colon cancer tissue using #37676 at dilution 1/40.



Immunohistochemical analysis of paraffin-embedded Human liver cancer tissue using #37676 at dilution 1/40.

Background

Voltage-gated potassium (Kv) channels represent the most complex class of voltage-gated ion channels from both functional and structural standpoints. Their diverse functions include regulating neurotransmitter release, heart rate, insulin secretion, neuronal excitability, epithelial electrolyte transport, smooth muscle contraction, and cell volume. This gene encodes a member of the potassium channel, voltage-gated, subfamily G. This member is a gamma subunit functioning as a modulatory molecule. Alternative splicing results in two transcript variants encoding distinct isoforms.

Note: This product is for in vitro research use only and is not intended for use in humans or animals.