

## RAP1A antibody

Catalog No: #22245

Orders: [order@signalwayantibody.com](mailto:order@signalwayantibody.com)Support: [tech@signalwayantibody.com](mailto:tech@signalwayantibody.com)

## Description

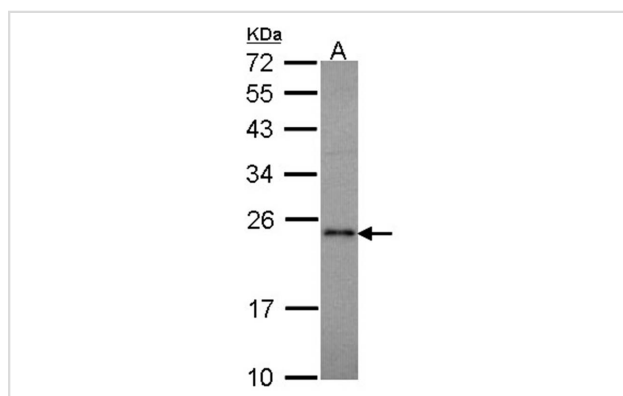
Product Name	RAP1A antibody
Host Species	Rabbit
Clonality	Polyclonal
Purification	Purified by antigen-affinity chromatography.
Applications	WB
Species Reactivity	Hu
Immunogen Type	Recombinant protein
Immunogen Description	Recombinant protein fragment contain a sequence corresponding to a region within amino acids 1 and 154 of RAP1A
Target Name	RAP1A
Other Names	RAP1; KREV1; KREV-1; SMGP21
Accession No.	NCBI Gene ID: 5906NCBI mRNA#: NM_001010935NCBI Protein#: NP_001010935
Concentration	0.5mg/ml
Formulation	Supplied in 0.1M Tris-buffered saline with 10% Glycerol (pH7.0). 0.01% Thimerosal was added as a preservative.
Storage	Store at -20°C for long term preservation (recommended). Store at 4°C for short term use.

## Application Details

Predicted MW: 21kd

Western blotting: 1:500-1:3000

## Images



Sample (30 ug of whole cell lysate)

A: Molt-4

12% SDS PAGE

RAP1A antibody diluted at 1: 1000

## Background

The product of this gene belongs to the family of RAS-related proteins. These proteins share approximately 50% amino acid identity with the classical RAS proteins and have numerous structural features in common. The most striking difference between RAP proteins and RAS proteins resides in their 61st amino acid: glutamine in RAS is replaced by threonine in RAP proteins. The product of this gene counteracts the mitogenic function of RAS because it can interact with RAS GAPs and RAF in a competitive manner. Two transcript variants encoding the same protein have been identified for

this gene. [provided by RefSeq]

---

Note: This product is for in vitro research use only and is not intended for use in humans or animals.