

Acetyl-Lysine Rabbit Polyclonal Antibody

Catalog No: #HW092



Package Size: #HW092-1 50ul #HW092-2 100ul

Orders: order@signalwayantibody.com
Support: tech@signalwayantibody.com

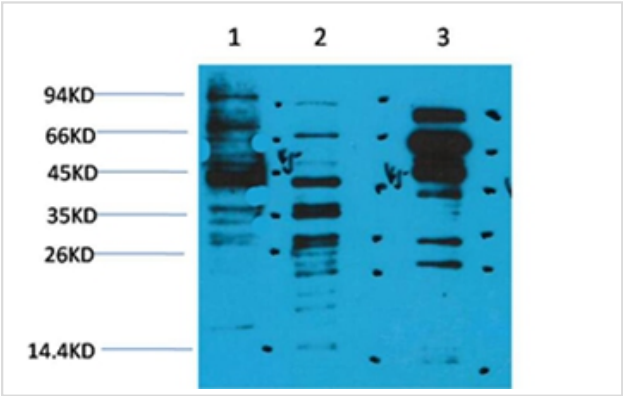
Description

Product Name	Acetyl-Lysine Rabbit Polyclonal Antibody
Host Species	Rabbit
Clonality	Polyclonal
Purification	Affinity purification using immunogen.
Applications	WB
Specificity	The Acetyl Lysine Rabbit Polyclonal Antibody detects endogenous Lysine Acetylated protein.
Target Name	Acetyl-Lysine
Modification	Acetyl
Other Names	Ac K antiodoby
Concentration	1.0mg/ml
Formulation	Rabbit Antiserum, containing 0.02% sodium azide as Preservative and 50% Glycerol.
Storage	Store at -20°C

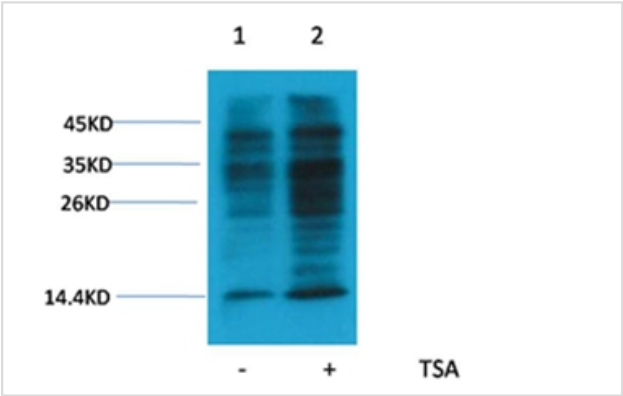
Application Details

Western blotting: 1:1000~1:2000

Images



Western blot analysis of 1) HeLa, 2)3T3 , 3) Rat Brain, using #HW092 diluted at 1:2,000.



Western blot analysis of extracts from HeLa cells, untreated (-) or treated with TSA (1µM, 18 hr; +), using #HW092 diluted at 1:2000.

Background

Acetylation of lysine, like phosphorylation of serine, threonine or tyrosine, is an important reversible modification controlling protein activity. The role of acetylation in intracellular signaling has been inferred from the binding of acetylated peptides by the conserved bromodomain.

Published Papers

el at., Sirt1 ameliorated cardiac autophagic flux blockage via Prx2 during myocardial ischemia/reperfusion injuryInOnby et al., , (2023)

PMID:

Note: This product is for in vitro research use only and is not intended for use in humans or animals.